

## NHATS Memorandum #1

### Recalculation of Weights for NHATS Rounds 5 and 6 and NSOC II

December 12, 2017

## **Introduction**

The initial NHATS cohort was first interviewed in 2011 and was designed to support weighted analysis of Medicare beneficiaries ages 65 and older living in the contiguous United States on September 30, 2010. This initial cohort has been interviewed annually. In Round 5, the sample was replenished by 5-year age groups and race (black and nonblack). The replenishment sample was drawn from Medicare beneficiaries enrolled as of September 30, 2014.

Starting in Round 5, separate sets of weights were developed to enable analyses of the initial cohort population (the “2011 Cohort”), as well as for analyses of the replenished Round 5 population (the “2015 Cohort”). For each cohort, two types of sampling weights have been produced (variable names start with w and are followed by round number e.g. 5; 2011 in the name indicates 2011 Cohort weight): a tracker weight (on the Tracker file with the variable names w5trfinwgt0 and w5tr2011wgt0) and an analytic weight (on the Sample Person file with the variable names w5anfinwgt0 and w5an2011wgt0). For variance estimation, NHATS has also included replicate versions of these weights (w5trfinwgt1-w5trfinwgt56 and w5anfinwgt1-w5anfinwgt56 for the 2015 Cohort; w5tr2011wgt1- w5tr2011wgt56 and w5an2011wgt1-w5an2011wgt56 for the 2011 Cohort).

A miscalculation of the weights for a small number of cases in the 2015 replenishment sample (n = 130 respondents; n = 211 sampled cases) was discovered in November 2017, which led to recalculating the analytic and tracker weights for the 2015 Cohort in both Rounds 5 and 6. NSOC II weights also were recalculated. Weights for the 2011 cohort were not affected. This technical note provides background on the miscalculation that occurred and its effects on the computation of the weights, as well as tables and graphs evaluating differences in several key estimates using the original and recalculated weights. Based on evaluations shown here, the magnitude of the change in estimates using the original and recalculated weights is small (see Appendix 1 and 2).

## **Background on Computation of the 2015 Cohort Round 5 and 6 Weights and the NSOC II Weights**

### **Tracker Weights**

In computing the 2015 Cohort tracker weights starting in Round 5, it was important to recognize the substantial overlap between persons eligible for the initial cohort in 2011 (those 65 or older, residing in the U.S., and enrolled in Medicare as of September 30, 2010) and persons eligible for the replenishment sample in 2015 (those 65 or older, residing in the U.S., and on Medicare as of September 30, 2014). Compositing, a weighting approach that essentially averages the weights of units from two or more independent samples that represent the same population, was used to account for this overlap for persons who were eligible at both points. Compositing was not applicable to persons who were only eligible for the replenishment sample in 2015. (See DeMatteis, Freedman, and Kasper 2015 and 2017 for details on the specific methodology used in computing and adjusting the Round 5 and Round 6 weights).

For persons eligible for both samples, the compositing step adjusted the weights by the factor

$$\gamma = \frac{neff_s}{neff_{orig} + neff_{replen}}$$

where  $neff_{orig}$  and  $neff_{replen}$  are the effective sample sizes (accounting for unequal weighting design effects) for the original sample and the replenishment sample, respectively, based on the weights that were used as input to the compositing process, and  $neff_s$  is the effective sample size for the sample into which the beneficiary was selected (either  $neff_{orig}$  or  $neff_{replen}$ ).

To produce the 2015 Cohort Round 5 tracker weights, two additional adjustments were made to the weight—an adjustment for Round 5 nonresponse and a raking adjustment to estimated population totals from the Medicare Enrollment DataBase. Similar adjustments were made in computing the Round 6 weights (beginning with the Round 5 nonresponse adjusted tracker weights).

### **Analytic Weights**

As for the tracker weights, separate analytic weights were computed starting in Round 5 for the 2015 Cohort (designed for analysis of the total sample consisting of both initial and replenishment cases) and for the 2011 Cohort (designed for analysis of the initial sample alone). The computation of the analytic weights begins with the tracker weight for the respective cohort. These weights are then adjusted for sample person interview nonresponse among completed cases (i.e., persons residing in facilities who were eligible for but did not complete the NHATS SP interview). As a final step, a raking procedure is applied so that marginal totals based on the analytic weights match the totals from the Medicare Enrollment Database at the time of sample replenishment (September 30, 2014).

### **NSOC II Weights**

The calculation of the NSOC II weights began with the NHATS 2015 Cohort analytic weight. For caregivers in networks with more than 5 eligible caregivers, the NHATS analytic weight was adjusted for caregiver subsampling (by multiplying the number of eligible caregivers divided by 5). Next, a 2-step weighting class adjustment for nonresponse was applied. A 2-step adjustment was used because there were two opportunities for NSOC interview nonresponse with potentially different mechanisms for nonresponse—nonresponse due to refusal to provide contact information by the NHATS Sample Person and non-response to the NSOC interview by caregivers (among caregivers for whom contact information was provided).

### **Miscalculation introduced in the weight compositing step**

Two groups were eligible for compositing in developing the 2015 Cohort Weight because they were eligible for the sample in both 2011 and 2015. The first group, eligible for compositing, was persons in the 2011 initial sample. The second group consisted of persons in the 2015 replenishment sample who also met sample eligibility criteria as of Sept. 30, 2010. A small number of cases in the second group, however, should not have been included in compositing, because although enrolled in Medicare on the date of the initial sample selection, they were less than 65 years of age at that time, thus were not eligible for the initial sample. As of the 2015 sample replenishment these individuals were 65 to 68 years of age, and met other eligibility criteria for sample selection.

A total of 211 cases, 130 of whom were respondents at Round 5 in 2015, were incorrectly included in the compositing step for the tracker and analytic weights, respectively, in Round 5. Inclusion of these cases in compositing at Round 5 also carried over to computation of the Round 6 weights and the NSOC II weights. All cases included in compositing contribute to the compositing factor and to the subsequent weight adjustments, so although only a small number of cases were included incorrectly, removing these cases from the compositing step resulted in changes when the weights were recalculated for Rounds 5 and 6 and NSOC II. Since the compositing step is not relevant to the 2011 Cohort weights introduced starting in 2015, these weights were not affected.

### **Recalculated weights and evaluation of effects on key estimates**

A “Version 2” of the 2015 and 2016 data files, and NSOC II files, have been produced with recalculated weights that correct for the miscalculation at the compositing step. We recommend that NHATS and NSOC Users download these data files.

Minor revisions also have been made to technical papers (DeMatteis, Freedman and Kasper, 2016a, 2016b, 2017) and the User Guides (Kasper and Freedman, 2017; Kasper, Freedman, and Spillman, 2017) to reflect changes related to the recalculated weights.

In order to evaluate the effect on estimates of using the recalculated versus the original weights, we examined differences for several key variables. Appendix I provides graphs showing the distribution of changes in estimates between the original and recalculated weights for NHATS Rounds 5 and 6 (42 variables overall and within 5-year age groups) and NSOC II (43 variables). Most differences are minimal, between 0 and  $<.05$ . Differences between  $.05$  and  $<.1$  are slightly higher in Round 6 compared to Round 5, but overall differences are concentrated in the lowest range. This holds true across 5-year age groups although some variation in the distribution of differences is observed. Appendix II provides more detailed tables showing estimates using both the original and recalculated weights for key variables from Rounds 5 and 6 of NHATS and NSOC II and the magnitude of change between the two.

## References

DeMatteis, Jill, Freedman, Vicki A., and Kasper, Judith D. 2016a. National Health and Aging Trends Study Round 5 Sample Design and Selection. NHATS Technical Paper #16. Baltimore: Johns Hopkins University School of Public Health. Available at [www.NHATS.org](http://www.NHATS.org).

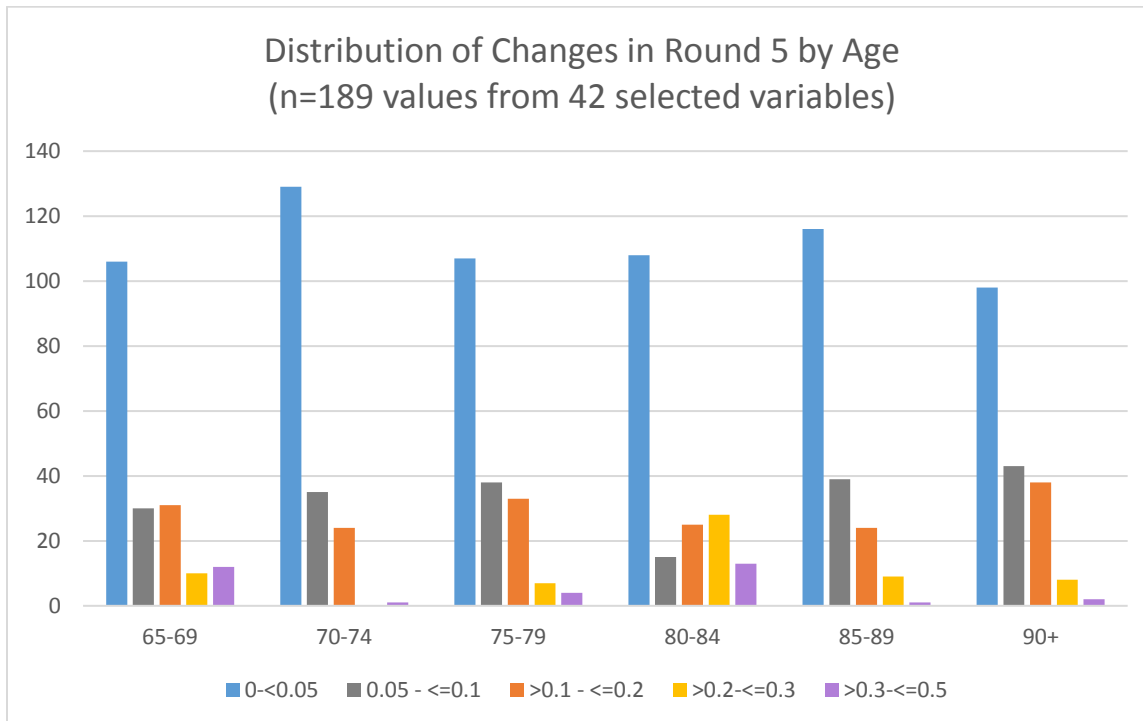
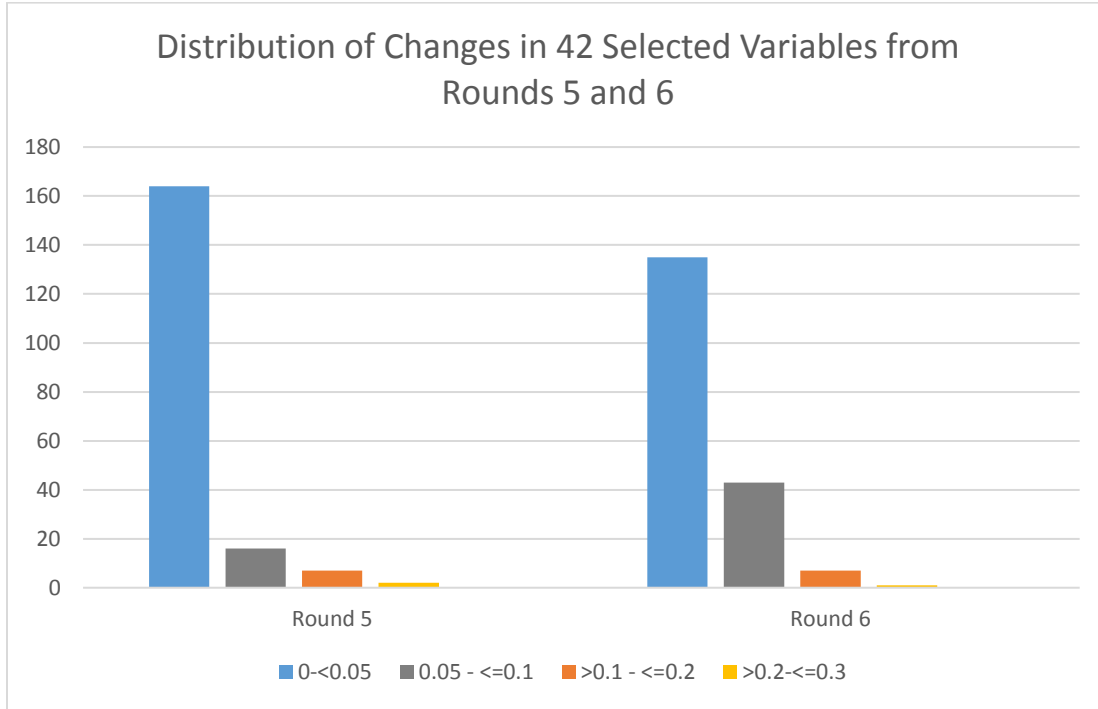
DeMatteis, Jill, Freedman, Vicki A., and Kasper, Judith D. 2016b. National Health and Aging Trends Study Development of Round 5 Survey Weights. NHATS Technical Paper #14. Baltimore: Johns Hopkins University School of Public Health. Available at [www.NHATS.org](http://www.NHATS.org).

DeMatteis, Jill M., Freedman, Vicki A., and Kasper, Judith D. 2017. National Health and Aging Trends Study Development of Round 6 Survey Weights. NHATS Technical Paper #18. Baltimore: Johns Hopkins University School of Public Health. Available at [www.NHATS.org](http://www.NHATS.org).

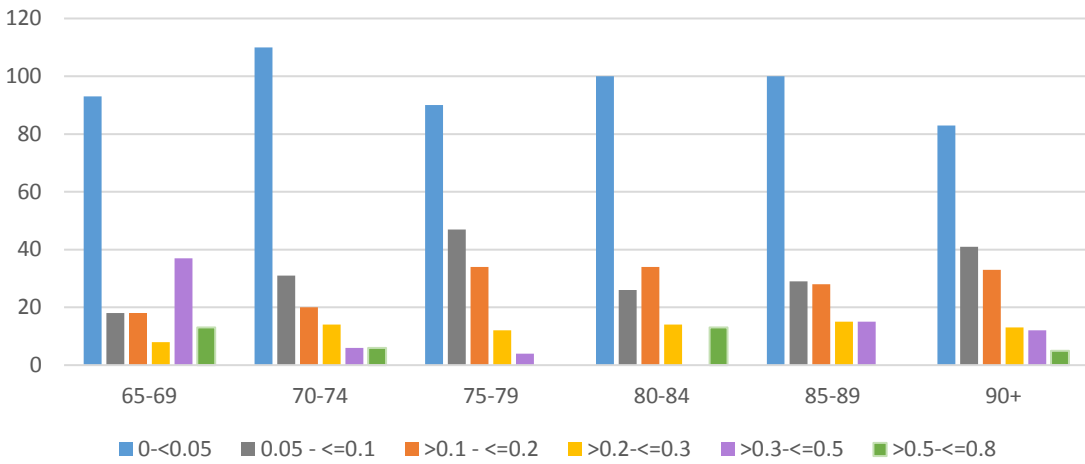
Kasper, Judith D. and Freedman, Vicki A. 2017. National Health and Aging Trends Study User Guide: Rounds 1-6 Final Release. Baltimore: Johns Hopkins University School of Public Health. Available at [www.NHATS.org](http://www.NHATS.org).

Kasper, Judith D., Freedman, Vicki A., and Spillman, Brenda. 2016. National Study of Caregiving User Guide. Baltimore: Johns Hopkins University School of Public Health. Available at [www.nhats.org](http://www.nhats.org).

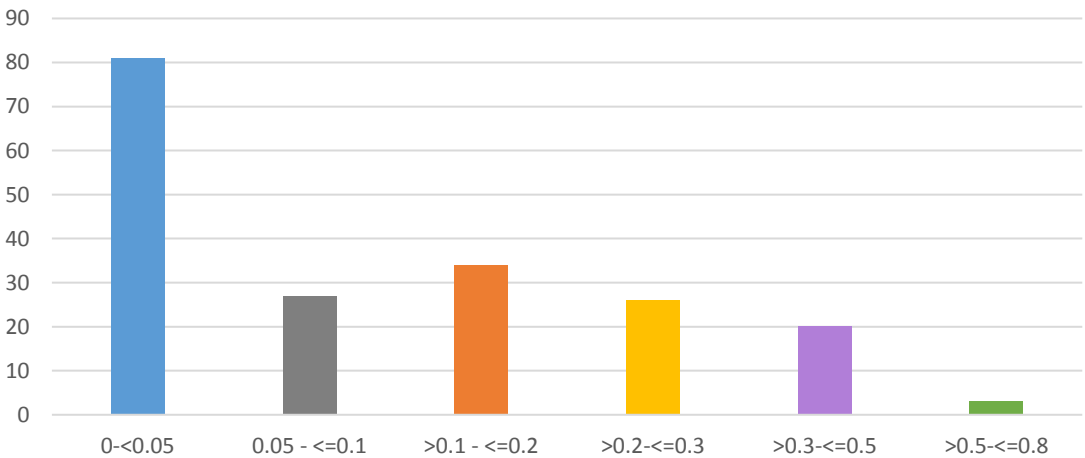
**Appendix I. Charts Showing Distribution of Change in Estimates on Key Variables**



Distribution of Changes in Round 6 by Age  
(n=186 values from 42 selected variables)



Distribution of Changes in NSOC  
(n=191 values from 43 selected variables)



**Appendix II. Detailed Tables Showing Estimates Using Original and Recalculated Weights and Magnitude of Change**

<b>NHATS Round 5 (Total Population)</b>			
	<b>Original (%)</b>	<b>Revised (%)</b>	<b>Change</b>
<b>Gender (r5dgender)</b>			
Male	44.51	44.55	0.04
Female	55.49	55.45	-0.04
<b>Race (r15dracehisp)</b>			
White, not Hispanic	77.91	77.79	-0.12
Black, not Hispanic	8.16	8.15	-0.01
Other	3.95	3.93	-0.02
Hispanic	6.90	7.02	0.12
More than one race	0.10	0.10	0.00
Don't know, refused	2.98	3.01	0.03
<b>Dementia Status (r5demclas)</b>			
Probable dementia	8.60	8.59	-0.01
No dementia	91.40	91.41	0.01
<b>Residential Care Status (r5dresid)</b>			
Community	94.74	94.71	-0.03
Residential care not nursing home (SP interview)	4.59	4.62	0.03
Nursing home (SP interview)	0.67	0.67	0.00
<b>Living Arrangement (hh5dlvngarrg)</b>			
Alone	30.19	30.26	0.07
With spouse/partner only	45.67	45.54	-0.13
With spouse/partner and others	9.98	10.04	0.06
With others only	14.16	14.15	-0.01
<b>Go outside by self (mo5doutsfdf)</b>			
1 Did not do by self in last month	5.07	5.07	0.00
2 Did by self in last month/No Difficulty	82.38	82.51	0.13
3 Did by self in last month/Difficulty	11.20	11.11	-0.09
4 DKRF Did by self in last month/No Difficulty	0.03	0.03	0.00
5 DKRF Did by self in last month/Difficulty	0.05	0.05	0.00
6 Did by self in last month/DKRF Difficulty	0.05	0.04	-0.01
7 DKRF Did by self in last month/DKRF Difficulty	0.01	0.01	0.00
8 Not done in last month	1.20	1.17	-0.03
<b>Go outside using devices (mo5doutdevi)</b>			
1 No use of devices to go outside in last month	77.00	77.04	0.04
2 Use of devices to go outside in last month	21.77	21.76	-0.01
3 DKRF If used devices to go outside in last month	0.02	0.02	0.00
4 DKRF If used devices in last month	0.01	0.01	0.00



8 Not done in last month	1.20	1.17	-0.03
<b>Go outside using help (mo5douthelp)</b>			
1 No help to go outside in last month	88.75	88.82	0.07
2 Had help to go outside in last month	9.98	9.92	-0.06
3 DKRF If had help to go outside in last month	0.08	0.08	0.00
8 Not done in last month	1.20	1.17	-0.03
<b>Move inside by self (mo5disndsfd)</b>			
1 Did not do by self in last month	1.63	1.63	0.00
2 Did by self in last month/No Difficulty	83.64	83.69	0.05
3 Did by self in last month/Difficulty	14.39	14.35	-0.04
4 DKRF Did by self in last month/No Difficulty	0.04	0.04	0.00
6 Did by self in last month/DKRF Difficulty	0.07	0.06	-0.01
7 DKRF Did by self in last month/DKRF Difficulty	0.04	0.04	0.00
8 Not done in last month	0.19	0.19	0.00
<b>Move inside using devices (mo5dinsddevi)</b>			
1 No use of devices inside in last month	80.75	80.78	0.03
2 Use of devices inside in last month	18.83	18.82	-0.01
3 DKRF If used devices inside in last month	0.21	0.21	0.00
4 DKRF If used devices in last month	0.01	0.01	0.00
8 Not done in last month	0.20	0.19	-0.01
<b>Move inside with help (mo5dinsdhelp)</b>			
1 No help to go around inside in last month	93.10	93.12	0.02
2 Had help to go around inside in last month	6.62	6.61	-0.01
3 DKRF If had help to go around inside in last month	0.08	0.08	0.00
8 Not done in last month	0.20	0.19	-0.01
<b>Get out of bed by self (mo5dbedsfd)</b>			
1 Did not do by self in last month	1.60	1.62	0.02
2 Did by self in last month/No Difficulty	80.40	80.37	-0.03
3 Did by self in last month/Difficulty	17.78	17.80	0.02
4 DKRF Did by self in last month/No Difficulty	0.04	0.04	0.00
5 DKRF Did by self in last month/Difficulty	0.01	0.01	0.00
6 Did by self in last month/DKRF Difficulty	0.06	0.06	0.00
7 DKRF Did by self in last month/DKRF Difficulty	0.11	0.10	-0.01
<b>Get out of bed using devices (mo5dbeddevi)</b>			
1 No use of cane or walker to get out of bed in last month	90.58	90.61	0.03
2 Use of cane or walker to get out of bed in last month	9.27	9.25	-0.02
3 DKRF If Used cane or walker to get out of bed in last month	0.14	0.13	-0.01
4 DKRF If used cane or walker in last month	0.01	0.01	0.00
<b>Get out of bed with help (mo5dbedhelp)</b>			
1 No help to get out of bed in last month	94.48	94.51	0.03
2 Had help to get out of bed in last month	5.36	5.35	-0.01

3 DKRF If had help to get out of bed in last month	0.16	0.14	-0.02
<b>Eat by self (sc5deatsfdf)</b>			
1 Did not do by self in last month	0.56	0.57	0.01
2 No Difficulty by self (and when using utensils)	94.96	94.98	0.02
3 Difficulty by self (and when using utensils)	4.28	4.26	-0.02
6 Did by self in last month/DKRF Difficulty	0.07	0.07	0.00
7 DKRF Did by self in last month/DKRF Difficulty	0.06	0.06	0.00
8 Not done in last month	0.06	0.05	-0.01
<b>Eat using devices (sc5deatdevi)</b>			
1 No use of adapted utensils in last month	99.50	99.51	0.01
2 Use of adapted utensils in last month	0.42	0.42	0.00
3 DKRF If used adapted utensils in last month	0.02	0.01	-0.01
8 Not done in last month	0.06	0.05	-0.01
<b>Eat with help (sc5deathelp)</b>			
1 No help eating in last month	95.52	95.50	-0.02
2 Had help eating in last month	4.33	4.36	0.03
3 DKRF If had help eating in last month	0.09	0.09	0.00
8 Not done in last month	0.06	0.05	-0.01
<b>Bathe by self (sc5dbathsfdf)</b>			
1 Did not do by self in last month	4.13	4.13	0.00
2 No Difficulty by self (and when using grab bars or tub seat)	85.85	85.85	0.00
3 Difficulty by self (and when using grab bars or tub seat)	9.74	9.77	0.03
6 Did by self in last month/DKRF Difficulty	0.09	0.08	-0.01
7 DKRF Did by self in last month/DKRF Difficulty	0.19	0.17	-0.02
<b>Bathe using devices (sc5dbathdevi)</b>			
1 No use of grab bars or bath seats in last month	18.34	18.40	0.06
2 Use of grab bars or bath seats in last month	37.59	37.56	-0.03
3 DKRF If use of grab bars or bath seats in last month	0.24	0.23	-0.01
4 DKRF If had grab bars or bath seats in last month	0.11	0.10	-0.01
9 No bars/seats/shower/tub or washes up other way	43.72	43.70	-0.02
<b>Bathe with help (sc5dbathhelp)</b>			
1 No help bathing in last month	91.93	91.92	-0.01
2 Had help bathing in last month	7.87	7.89	0.02
3 DKRF If had help bathing in last month	0.20	0.19	-0.01
<b>Toilet by self (sc5dtoilsfdf)</b>			
1 Did not do by self in last month	1.46	1.46	0.00
2 No Difficulty by self (and when using toileting devices)	92.03	92.03	0.00
3 Difficulty by self (and when using toileting devices)	6.26	6.28	0.02
6 Did by self in last month/DKRF Difficulty	0.16	0.15	-0.01
7 DKRF Did by self in last month/DKRF Difficulty	0.09	0.07	-0.02
<b>Toilet using devices (sc5dtoildevi)</b>			

1 No use of toileting devices in last month	55.52	55.74	0.22
2 Use of toileting devices in last month	44.25	44.04	-0.21
3 DKRF of some and no use of other toileting devices in last month	0.22	0.22	0.00
<b>Toilet with help (sc5dtoilhelp)</b>			
1 No help toileting in last month	96.63	96.64	0.01
2 Had help toileting in last month	3.24	3.24	0.00
3 DKRF If had help toileting in last month	0.13	0.12	-0.01
<b>Dress by self (sc5ddressfdf)</b>			
1 Did not do by self in last month	2.47	2.44	-0.03
2 No Difficulty by self (and when using dressing devices)	82.85	82.86	0.01
3 Difficulty by self (and when using dressing devices)	14.08	14.10	0.02
6 Did by self in last month/DKRF Difficulty	0.12	0.11	-0.01
7 DKRF Did by self in last month/DKRF Difficulty	0.13	0.11	-0.02
8 Not done in last month	0.35	0.37	0.02
<b>Dress using devices (sc5ddresdevi)</b>			
1 No use of dressing devices in last month	95.91	95.86	-0.05
2 Use of dressing devices in last month	3.61	3.65	0.04
3 DKRF If use of dressing devices in last month	0.04	0.04	0.00
8 Not done in last month	0.35	0.37	0.02
9 DKRF If dressed in last month	0.08	0.08	0.00
<b>Dress with help (sc5ddreshelp)</b>			
1 No help dressing in last month	88.61	88.61	0.00
2 Had help dressing in last month	10.88	10.88	0.00
3 DKRF If had help dressing in last month	0.07	0.06	-0.01
8 Not done in last month	0.35	0.37	0.02
9 DKRF If dressed in last month	0.07	0.08	0.01
<b>Laundry by self (ha5dlaunsfdf)</b>			
1 Did not do by self in last month	36.79	36.71	-0.08
2 Did by self in last month/No Difficulty	57.20	57.34	0.14
3 Did by self in last month/Difficulty	5.79	5.73	-0.06
4 DKRF Did by self in last month/No Difficulty	0.00	0.00	0.00
7 DKRF Did by self in last month/DKRF Difficulty	0.11	0.10	-0.01
8 Not done in last month	0.11	0.11	0.00
<b>Shopping by self (ha5dshopsfdf)</b>			
1 Did not do by self in last month	36.60	36.69	0.09
2 Did by self in last month/No Difficulty	54.99	54.99	0.00
3 Did by self in last month/Difficulty	7.88	7.80	-0.08
7 DKRF Did by self in last month/DKRF Difficulty	0.03	0.02	-0.01
8 Not done in last month	0.51	0.49	-0.02
<b>Meals by self (ha5dmealsfdf)</b>			
1 Did not do by self in last month	29.79	29.79	0.00

2 Did by self in last month/No Difficulty	60.70	60.72	0.02
3 Did by self in last month/Difficulty	8.89	8.88	-0.01
4 DKRF Did by self in last month/No Difficulty	0.01	0.01	0.00
5 DKRF Did by self in last month/Difficulty	0.02	0.02	0.00
6 Did by self in last month/DKRF Difficulty	0.02	0.02	0.00
7 DKRF Did by self in last month/DKRF Difficulty	0.01	0.02	0.01
8 Not done in last month	0.56	0.54	-0.02
<b>Banking by self (ha5dbanksfdf)</b>			
1 Did not do by self in last month	31.64	31.60	-0.04
2 Did by self in last month/No Difficulty	62.56	62.56	0.00
3 Did by self in last month/Difficulty	5.12	5.15	0.03
4 DKRF Did by self in last month/No Difficulty	0.17	0.16	-0.01
6 Did by self in last month/DKRF Difficulty	0.00	0.03	0.03
7 DKRF Did by self in last month/DKRF Difficulty	0.19	0.18	-0.01
8 Not done in last month	0.32	0.33	0.01
<b>Walk 6 blocks (pc5walk6blks)</b>			
-8 Don't Know	1.32	1.35	0.03
-7 Refused	0.02	0.02	0.00
1 Yes	66.28	66.37	0.09
2 No	32.37	32.26	-0.11
<b>Walk 3 blocks (pc5walk3blks)</b>			
-8 Don't Know	0.72	0.73	0.01
-7 Refused	0.01	0.01	0.00
-1 Inapplicable	66.28	66.37	0.09
1 Yes	7.53	7.49	-0.04
2 No	25.45	25.40	-0.05
<b>Walk up 20 stairs (pc5up20stair)</b>			
-8 Don't Know	1.25	1.24	-0.01
1 Yes	72.98	73.01	0.03
2 No	25.77	25.75	-0.02
<b>Walk up 10 stairs (pc5up10stair)</b>			
-8 Don't Know	0.91	0.92	0.01
-1 Inapplicable	72.98	73.01	0.03
1 Yes	8.46	8.43	-0.03
2 No	17.64	17.63	-0.01
<b>Carry 20 pounds (pc5car20pnds)</b>			
-8 Don't Know	0.85	0.85	0.00
1 Yes	72.31	72.30	-0.01
2 No	26.84	26.85	0.01
<b>Carry 10 pounds (pc5car10pnds)</b>			
-8 Don't Know	0.48	0.47	-0.01

-1 Inapplicable	72.31	72.30	-0.01
1 Yes	9.87	9.90	0.03
2 No	17.34	17.32	-0.02
<b>Get down on knees (pc5geonknees)</b>			
-8 Don't Know	1.12	1.11	-0.01
-7 Refused	0.03	0.03	0.00
1 Yes	44.47	44.45	-0.02
2 No	54.38	54.41	0.03
<b>Bend over (pc5bendover)</b>			
-8 Don't Know	0.33	0.32	-0.01
-1 Inapplicable	44.47	44.45	-0.02
1 Yes	36.92	37.04	0.12
2 No	18.27	18.19	-0.08
<b>Lift heavy object above head (pc5hvobovrhd)</b>			
-8 Don't Know	1.28	1.29	0.01
1 Yes	80.63	80.67	0.04
2 No	18.09	18.04	-0.05
<b>Reach overhead (pc5rechovrhd)</b>			
-8 Don't Know	0.37	0.37	0.00
-1 Inapplicable	80.63	80.67	0.04
1 Yes	7.45	7.48	0.03
2 No	11.54	11.48	-0.06
<b>Open sealed jar with hands (pc5opnjarwhd)</b>			
-8 Don't Know	0.49	0.49	0.00
1 Yes	74.57	74.57	0.00
2 No	24.94	24.94	0.00
<b>Grasp small objects (pc5grpsmobj)</b>			
-8 Don't Know	0.15	0.15	0.00
-1 Inapplicable	74.57	74.57	0.00
1 Yes	21.66	21.64	-0.02
2 No	3.62	3.64	0.02

NHATS Round 6 (total population)			
	Original (%)	Revised (%)	Change
<b>Gender (r5dgender)</b>			
Male	44.41	44.47	0.06
Female	55.59	55.53	-0.06
<b>Race (r15dracehisp)</b>			
White, not Hispanic	78.07	78.10	0.03
Black, not Hispanic	8.13	8.10	-0.03
Other	3.68	3.81	0.13
Hispanic	7.20	7.12	-0.08
More than one race	0.13	0.12	-0.01
Don't know, refused	2.78	2.75	-0.03
<b>Dementia Status (r6demclas)</b>			
Probable dementia	9.51	9.48	-0.03
No dementia	90.49	90.52	0.03
<b>Residential Care Status (r6dresid)</b>			
Community	93.99	93.93	-0.06
Residential care not nursing home (SP interview)	4.77	4.86	0.09
Nursing home (SP interview)	1.24	1.22	-0.02
<b>Living Arrangement (hh6dlvngarrg)</b>			
Alone	30.54	30.66	0.12
With spouse/partner only	44.00	43.71	-0.29
With spouse/partner and others	10.53	10.68	0.15
With others only	14.93	14.94	0.01
<b>Go outside by self (mo6doutsfdf)</b>			
1 Did not do by self in last month	5.25	5.25	0.00
2 Did by self in last month/No Difficulty	81.63	81.64	0.01
3 Did by self in last month/Difficulty	11.45	11.44	-0.01
4 DKRF Did by self in last month/No Difficulty	0.03	0.03	0.00
5 DKRF Did by self in last month/Difficulty	0.02	0.02	0.00
6 Did by self in last month/DKRF Difficulty	0.08	0.08	0.00
8 Not done in last month	1.54	1.55	0.01
<b>Go outside using devices (mo6doutdevi)</b>			
1 No use of devices to go outside in last month	75.66	75.61	-0.05
2 Use of devices to go outside in last month	22.77	22.81	0.04
3 DKRF If used devices to go outside in last month	0.01	0.01	0.00
4 DKRF If used devices in last month	0.02	0.02	0.00
8 Not done in last month	1.54	1.55	0.01
<b>Go outside using help (mo6douthelp)</b>			
1 No help to go outside in last month	87.88	87.87	-0.01
2 Had help to go outside in last month	10.57	10.57	0.00

3 DKRF If had help to go outside in last month	0.01	0.01	0.00
8 Not done in last month	1.54	1.55	0.01
<b>Move inside by self (mo6disndsfdf)</b>			
1 Did not do by self in last month	1.72	1.73	0.01
2 Did by self in last month/No Difficulty	83.00	82.94	-0.06
3 Did by self in last month/Difficulty	14.84	14.88	0.04
5 DKRF Did by self in last month/Difficulty	0.07	0.08	0.01
6 Did by self in last month/DKRF Difficulty	0.04	0.04	0.00
7 DKRF Did by self in last month/DKRF Difficulty	0.01	0.01	0.00
8 Not done in last month	0.32	0.32	0.00
<b>Move inside using devices (mo6dinsddevi)</b>			
1 No use of devices inside in last month	79.61	79.57	-0.04
2 Use of devices inside in last month	19.80	19.82	0.02
3 DKRF If used devices inside in last month	0.26	0.27	0.01
4 DKRF If used devices in last month	0.02	0.02	0.00
8 Not done in last month	0.31	0.32	0.01
<b>Move inside with help (mo6dinsdhelp)</b>			
1 No help to go around inside in last month	92.55	92.59	0.04
2 Had help to go around inside in last month	7.05	7.00	-0.05
3 DKRF If had help to go around inside in last month	0.09	0.09	0.00
8 Not done in last month	0.31	0.32	0.01
<b>Get out of bed by self (mo6dbedsfdf)</b>			
1 Did not do by self in last month	1.81	1.87	0.06
2 Did by self in last month/No Difficulty	80.13	80.03	-0.10
3 Did by self in last month/Difficulty	17.86	17.91	0.05
4 DKRF Did by self in last month/No Difficulty	0.03	0.00	-0.03
5 DKRF Did by self in last month/Difficulty	0.09	0.09	0.00
6 Did by self in last month/DKRF Difficulty	0.03	0.02	-0.01
7 DKRF Did by self in last month/DKRF Difficulty	0.05	0.06	0.01
<b>Get out of bed using devices (mo6dbeddevi)</b>			
1 No use of cane or walker to get out of bed in last month	89.94	89.88	-0.06
2 Use of cane or walker to get out of bed in last month	10.01	10.07	0.06
3 DKRF If Used cane or walker to get out of bed in last month	0.03	0.03	0.00
4 DKRF If used cane or walker in last month	0.02	0.02	0.00
<b>Get out of bed with help (mo6dbedhelp)</b>			
1 No help to get out of bed in last month	93.90	93.90	0.00
2 Had help to get out of bed in last month	5.96	5.96	0.00
3 DKRF If had help to get out of bed in last month	0.13	0.15	0.02
<b>Eat by self (sc6deatsfdf)</b>			
1 Did not do by self in last month	0.64	0.64	0.00
2 No Difficulty by self (and when using utensils)	94.66	94.56	-0.10

3 Difficulty by self (and when using utensils)	4.59	4.71	0.12
6 Did by self in last month/DKRF Difficulty	0.02	0.02	0.00
8 Not done in last month	0.08	0.08	0.00
<b>Eat using devices (sc6deatdevi)</b>			
1 No use of adapted utensils in last month	99.37	99.37	0.00
2 Use of adapted utensils in last month	0.51	0.53	0.02
3 DKRF If used adapted utensils in last month	0.03	0.03	0.00
8 Not done in last month	0.08	0.08	0.00
<b>Eat with help (sc6deathelp)</b>			
1 No help eating in last month	95.13	95.16	0.03
2 Had help eating in last month	4.79	4.76	-0.03
3 DKRF If had help eating in last month	0.00	0.00	0.00
8 Not done in last month	0.08	0.08	0.00
<b>Bathe by self (sc6dbathsdf)</b>			
1 Did not do by self in last month	4.83	4.83	0.00
2 No Difficulty by self (and when using grab bars or tub seat)	84.86	84.81	-0.05
3 Difficulty by self (and when using grab bars or tub seat)	10.21	10.27	0.06
6 Did by self in last month/DKRF Difficulty	0.07	0.07	0.00
7 DKRF Did by self in last month/DKRF Difficulty	0.03	0.03	0.00
<b>Bathe using devices (sc6dbathdevi)</b>			
1 No use of grab bars or bath seats in last month	19.00	18.93	-0.07
2 Use of grab bars or bath seats in last month	40.23	40.26	0.03
3 DKRF If use of grab bars or bath seats in last month	0.14	0.14	0.00
4 DKRF If had grab bars or bath seats in last month	0.06	0.05	-0.01
9 No bars/seats/shower/tub or washes up other way	40.57	40.61	0.04
<b>Bathe with help (sc6dbathhelp)</b>			
1 No help bathing in last month	90.95	90.94	-0.01
2 Had help bathing in last month	8.97	8.98	0.01
3 DKRF If had help bathing in last month	0.08	0.08	0.00
<b>Toilet by self (sc6dtoilsdf)</b>			
1 Did not do by self in last month	1.45	1.48	0.03
2 No Difficulty by self (and when using toileting devices)	91.56	91.47	-0.09
3 Difficulty by self (and when using toileting devices)	6.88	6.93	0.05
6 Did by self in last month/DKRF Difficulty	0.10	0.12	0.02
7 DKRF Did by self in last month/DKRF Difficulty	0.01	0.01	0.00
<b>Toilet using devices (sc6dtoildevi)</b>			
1 No use of toileting devices in last month	53.04	53.09	0.05
2 Use of toileting devices in last month	46.81	46.75	-0.06
3 DKRF of some and no use of other toileting devices in last month	0.15	0.16	0.01
<b>Toilet with help (sc6dtoilhelp)</b>			
1 No help toileting in last month	96.58	96.54	-0.04



2 Had help toileting in last month	3.37	3.42	0.05
3 DKRF If had help toileting in last month	0.05	0.04	-0.01
<b>Dress by self (sc6ddressfdf)</b>			
1 Did not do by self in last month	2.80	2.74	-0.06
2 No Difficulty by self (and when using dressing devices)	82.47	82.42	-0.05
3 Difficulty by self (and when using dressing devices)	14.24	14.34	0.10
6 Did by self in last month/DKRF Difficulty	0.03	0.03	0.00
7 DKRF Did by self in last month/DKRF Difficulty	0.09	0.09	0.00
8 Not done in last month	0.37	0.38	0.01
<b>Dress using devices (sc6ddresdevi)</b>			
1 No use of dressing devices in last month	95.61	95.57	-0.04
2 Use of dressing devices in last month	3.91	3.95	0.04
3 DKRF If use of dressing devices in last month	0.01	0.01	0.00
8 Not done in last month	0.38	0.38	0.00
9 DKRF If dressed in last month	0.09	0.09	0.00
<b>Dress with help (sc6ddreshelp)</b>			
1 No help dressing in last month	87.43	87.40	-0.03
2 Had help dressing in last month	12.11	12.12	0.01
3 DKRF If had help dressing in last month	0.00	0.00	0.00
8 Not done in last month	0.37	0.38	0.01
9 DKRF If dressed in last month	0.09	0.09	0.00
<b>Laundry by self (ha6dlaunsfdf)</b>			
1 Did not do by self in last month	37.11	37.05	-0.06
2 Did by self in last month/No Difficulty	57.60	57.67	0.07
3 Did by self in last month/Difficulty	5.23	5.21	-0.02
4 DKRF Did by self in last month/No Difficulty	0.03	0.03	0.00
8 Not done in last month	0.03	0.04	0.01
<b>Shopping by self (ha6dshopsfdf)</b>			
1 Did not do by self in last month	34.99	34.91	-0.08
2 Did by self in last month/No Difficulty	56.87	56.94	0.07
3 Did by self in last month/Difficulty	7.60	7.64	0.04
4 DKRF Did by self in last month/No Difficulty	0.01	0.00	-0.01
6 Did by self in last month/DKRF Difficulty	0.01	0.01	0.00
7 DKRF Did by self in last month/DKRF Difficulty	0.01	0.00	-0.01
8 Not done in last month	0.51	0.50	-0.01
<b>Meals by self (ha6dmealsfdf)</b>			
1 Did not do by self in last month	28.55	28.69	0.14
2 Did by self in last month/No Difficulty	61.96	61.84	-0.12
3 Did by self in last month/Difficulty	8.96	8.92	-0.04
5 DKRF Did by self in last month/Difficulty	0.02	0.02	0.00
6 Did by self in last month/DKRF Difficulty	0.06	0.05	-0.01

7 DKRF Did by self in last month/DKRF Difficulty	0.03	0.04	0.01
8 Not done in last month	0.42	0.42	0.00
<b>Banking by self (ha6dbanksfdf)</b>			
1 Did not do by self in last month	31.71	31.69	-0.02
2 Did by self in last month/No Difficulty	62.72	62.83	0.11
3 Did by self in last month/Difficulty	4.93	4.86	-0.07
4 DKRF Did by self in last month/No Difficulty	0.08	0.08	0.00
6 Did by self in last month/DKRF Difficulty	0.01	0.00	-0.01
7 DKRF Did by self in last month/DKRF Difficulty	0.27	0.26	-0.01
8 Not done in last month	0.28	0.28	0.00
<b>Walk 6 blocks (pc6walk6blks)</b>			
-8 Don't Know	1.26	1.28	0.02
1 Yes	65.07	65.05	-0.02
2 No	33.67	33.67	0.00
<b>Walk 3 blocks (pc6walk3blks)</b>			
-8 Don't Know	0.69	0.72	0.03
-1 Inapplicable	65.07	65.05	-0.02
1 Yes	7.48	7.39	-0.09
2 No	26.75	26.84	0.09
<b>Walk up 20 stairs (pc6up20stair)</b>			
-8 Don't Know	1.30	1.33	0.03
-7 Refused	0.01	0.01	0.00
1 Yes	72.06	72.01	-0.05
2 No	26.63	26.65	0.02
<b>Walk up 10 stairs (pc6up10stair)</b>			
-8 Don't Know	0.63	0.67	0.04
-1 Inapplicable	72.06	72.01	-0.05
1 Yes	8.83	8.84	0.01
2 No	18.48	18.48	0.00
<b>Carry 20 pounds (pc6car20pnds)</b>			
-8 Don't Know	0.48	0.49	0.01
1 Yes	71.50	71.51	0.01
2 No	28.02	28.00	-0.02
<b>Carry 10 pounds (pc6car10pnds)</b>			
-8 Don't Know	0.42	0.43	0.01
-1 Inapplicable	71.50	71.51	0.01
1 Yes	10.66	10.56	-0.10
2 No	17.41	17.51	0.10
<b>Get down on knees (pc6geonknees)</b>			
-8 Don't Know	1.22	1.22	0.00
1 Yes	42.23	42.13	-0.10

2 No	56.55	56.64	0.09
<b>Bend over (pc6bendover)</b>			
-8 Don't Know	0.23	0.26	0.03
-1 Inapplicable	42.23	42.13	-0.10
1 Yes	37.63	37.69	0.06
2 No	19.91	19.92	0.01
<b>Lift heavy object above head (pc6hvobovrhd)</b>			
-8 Don't Know	1.05	1.06	0.01
1 Yes	80.87	80.79	-0.08
2 No	18.08	18.16	0.08
<b>Reach overhead (pc6rechovrhd)</b>			
-8 Don't Know	0.24	0.25	0.01
-7 Refused	0.01	0.01	0.00
-1 Inapplicable	80.87	80.79	-0.08
1 Yes	6.87	6.91	0.04
2 No	12.01	12.05	0.04
<b>Open sealed jar with hands (pc6opnjarwhd)</b>			
-8 Don't Know	0.63	0.62	-0.01
1 Yes	75.19	75.20	0.01
2 No	24.18	24.18	0.00
<b>Grasp small objects (pc6grspsmobj)</b>			
-8 Don't Know	0.09	0.09	0.00
-1 Inapplicable	75.19	75.20	0.01
1 Yes	20.80	20.75	-0.05
2 No	3.92	3.97	0.05

	NHATS Round 5			NHATS Round 5			NHATS Round 5		
	65-69			70-74			75-79		
	Original (%)	Revised (%)	Change	Original (%)	Revised (%)	Change	Original (%)	Revised (%)	Change
<b>Gender (r5dgender)</b>									
Male	47.89	47.93	0.04	45.48	45.50	0.02	45.74	45.82	0.08
Female	52.11	52.07	-0.04	54.52	54.50	-0.02	54.26	54.18	-0.08
<b>Race (r15dracehisp)</b>									
White, not Hispanic	75.91	75.65	-0.26	76.84	76.91	0.07	78.89	78.71	-0.18
Black, not Hispanic	8.49	8.47	-0.02	8.45	8.45	0.00	8.26	8.28	0.02
Other	4.36	4.33	-0.03	4.40	4.37	-0.03	3.50	3.46	-0.04
Hispanic	7.81	8.01	0.20	6.75	6.82	0.07	6.72	6.84	0.12
More than one race	0.12	0.12	0.00	0.19	0.18	-0.01	0.02	0.02	0.00
Don't know, refused	3.30	3.42	0.12	3.37	3.27	-0.10	2.61	2.68	0.07
<b>Dementia Status (r5demclas)</b>									
Probable dementia	1.96	1.91	-0.05	3.98	4.08	0.10	7.87	7.82	-0.05
No dementia	98.04	98.09	0.05	96.02	95.92	-0.10	92.13	92.18	0.05
<b>Residential Care Status (r5dresid)</b>									
Community	99.06	98.99	-0.07	97.99	98.01	0.02	96.77	96.71	-0.06
Residential care not nursing home (SP interview)	0.94	1.01	0.07	1.77	1.75	-0.02	2.96	3.02	0.06
Nursing home (SP interview)	0.00	0.00	0.00	0.24	0.24	0.00	0.27	0.27	0.00
<b>Living Arrangement (hh5dlvngarrg)</b>									
Alone	21.85	22.02	0.17	25.28	25.38	0.10	30.46	30.45	-0.01
With spouse/partner only	54.73	54.29	-0.44	51.35	51.28	-0.07	44.76	44.90	0.14
With spouse/partner and others	11.20	11.38	0.18	11.71	11.70	-0.01	10.59	10.71	0.12
With others only	12.22	12.31	0.09	11.66	11.64	-0.02	14.19	13.94	-0.25
<b>Go outside by self (mo5doutsfdf)</b>									
1 Did not do by self in last month	1.46	1.52	0.06	2.38	2.45	0.07	3.59	3.58	-0.01
2 Did by self in last month/No Difficulty	88.23	88.22	-0.01	87.06	87.14	0.08	85.04	85.26	0.22
3 Did by self in last month/Difficulty	9.57	9.58	0.01	9.86	9.71	-0.15	10.85	10.69	-0.16
4 DKRF Did by self in last month/No Difficulty	0.00	0.00	0.00	0.00	0.00	0.00	0.00	0.00	0.00
5 DKRF Did by self in last month/Difficulty	0.08	0.08	0.00	0.00	0.00	0.00	0.00	0.00	0.00
6 Did by self in last month/DKRF Difficulty	0.00	0.00	0.00	0.12	0.11	-0.01	0.05	0.05	0.00
7 DKRF Did by self in last month/DKRF Difficulty	0.00	0.00	0.00	0.00	0.00	0.00	0.00	0.00	0.00
8 Not done in last month	0.65	0.59	-0.06	0.58	0.59	0.01	0.47	0.42	-0.05
<b>Go outside using devices (mo5doutdevi)</b>									
1 No use of devices to go outside in last month	88.53	88.22	-0.31	84.21	84.32	0.11	80.61	80.91	0.30
2 Use of devices to go outside in last month	10.82	11.18	0.36	15.12	15.01	-0.11	18.87	18.62	-0.25
3 DKRF If used devices to go outside in last month	0.00	0.00	0.00	0.08	0.08	0.00	0.00	0.00	0.00
4 DKRF If used devices in last month	0.00	0.00	0.00	0.00	0.00	0.00	0.05	0.05	0.00
8 Not done in last month	0.65	0.60	-0.05	0.58	0.59	0.01	0.47	0.42	-0.05
<b>Go outside using help (mo5douthelp)</b>									
1 No help to go outside in last month	95.28	95.24	-0.04	93.27	93.31	0.04	90.85	90.94	0.09
2 Had help to go outside in last month	3.99	4.08	0.09	6.15	6.10	-0.05	8.68	8.63	-0.05
3 DKRF If had help to go outside in last month	0.08	0.08	0.00	0.00	0.00	0.00	0.00	0.00	0.00
8 Not done in last month	0.65	0.60	-0.05	0.58	0.59	0.01	0.47	0.42	-0.05

<b>Move inside by self (mo5disndsdfd)</b>									
1 Did not do by self in last month	0.07	0.10	0.03	0.78	0.82	0.04	1.08	1.06	-0.02
2 Did by self in last month/No Difficulty	88.40	88.26	-0.14	86.90	86.92	0.02	84.25	84.44	0.19
3 Did by self in last month/Difficulty	11.31	11.45	0.14	12.20	12.14	-0.06	14.38	14.25	-0.13
4 DKRF Did by self in last month/No Difficulty	0.00	0.00	0.00	0.00	0.00	0.00	0.00	0.00	0.00
6 Did by self in last month/DKRF Difficulty	0.00	0.00	0.00	0.07	0.06	-0.01	0.22	0.18	-0.04
7 DKRF Did by self in last month/DKRF Difficulty	0.10	0.10	0.00	0.00	0.00	0.00	0.05	0.05	0.00
8 Not done in last month	0.12	0.09	-0.03	0.05	0.06	0.01	0.02	0.02	0.00
<b>Move inside using devices (mo5dinsddevi)</b>									
1 No use of devices inside in last month	90.85	90.63	-0.22	87.17	87.24	0.07	83.64	83.82	0.18
2 Use of devices inside in last month	8.92	9.18	0.26	12.47	12.37	-0.10	15.98	15.85	-0.13
3 DKRF If used devices inside in last month	0.10	0.10	0.00	0.31	0.33	0.02	0.31	0.26	-0.05
4 DKRF If used devices in last month	0.00	0.00	0.00	0.00	0.00	0.00	0.05	0.05	0.00
8 Not done in last month	0.12	0.08	-0.04	0.05	0.06	0.01	0.02	0.02	0.00
<b>Move inside with help (mo5dinsdhelp)</b>									
1 No help to go around inside in last month	96.71	96.68	-0.03	96.03	95.99	-0.04	93.44	93.53	0.09
2 Had help to go around inside in last month	3.06	3.14	0.08	3.92	3.96	0.04	6.49	6.40	-0.09
3 DKRF If had help to go around inside in last month	0.10	0.10	0.00	0.00	0.00	0.00	0.05	0.05	0.00
8 Not done in last month	0.12	0.08	-0.04	0.05	0.05	0.00	0.02	0.02	0.00
<b>Get out of bed by self (mo5dbedsdfd)</b>									
1 Did not do by self in last month	0.27	0.34	0.07	0.97	0.99	0.02	1.13	1.15	0.02
2 Did by self in last month/No Difficulty	83.71	83.52	-0.19	84.39	84.48	0.09	79.61	79.51	-0.10
3 Did by self in last month/Difficulty	16.02	16.14	0.12	14.64	14.53	-0.11	18.74	18.85	0.11
4 DKRF Did by self in last month/No Difficulty	0.00	0.00	0.00	0.00	0.00	0.00	0.07	0.07	0.00
5 DKRF Did by self in last month/Difficulty	0.00	0.00	0.00	0.00	0.00	0.00	0.05	0.05	0.00
6 Did by self in last month/DKRF Difficulty	0.00	0.00	0.00	0.00	0.00	0.00	0.23	0.24	0.01
7 DKRF Did by self in last month/DKRF Difficulty	0.00	0.00	0.00	0.00	0.00	0.00	0.17	0.13	-0.04
<b>Get out of bed using devices (mo5dbeddevi)</b>									
1 No use of cane or walker to get out of bed in last month	96.13	95.98	-0.15	94.34	94.39	0.05	91.55	91.64	0.09
2 Use of cane or walker to get out of bed in last month	3.87	4.02	0.15	5.59	5.53	-0.06	8.21	8.12	-0.09
3 DKRF If Used cane or walker to get out of bed in last month	0.00	0.00	0.00	0.07	0.07	0.00	0.19	0.19	0.00
4 DKRF If used cane or walker in last month	0.00	0.00	0.00	0.00	0.00	0.00	0.05	0.05	0.00
<b>Get out of bed with help (mo5dbedhelp)</b>									
1 No help to get out of bed in last month	97.13	97.10	-0.03	96.08	96.08	0.00	95.36	95.45	0.09
2 Had help to get out of bed in last month	2.87	2.90	0.03	3.92	3.92	0.00	4.35	4.30	-0.05
3 DKRF If had help to get out of bed in last month	0.00	0.00	0.00	0.00	0.00	0.00	0.29	0.25	-0.04
<b>Eat by self (sc5deatsdfd)</b>									
1 Did not do by self in last month	0.52	0.56	0.04	0.21	0.20	-0.01	0.53	0.53	0.00
2 No Difficulty by self (and when using utensils)	96.77	96.83	0.06	96.47	96.49	0.02	96.29	96.28	-0.01
3 Difficulty by self (and when using utensils)	2.40	2.34	-0.06	3.32	3.31	-0.01	2.86	2.92	0.06
6 Did by self in last month/DKRF Difficulty	0.00	0.00	0.00	0.00	0.00	0.00	0.23	0.18	-0.05
7 DKRF Did by self in last month/DKRF Difficulty	0.19	0.18	-0.01	0.00	0.00	0.00	0.05	0.05	0.00
8 Not done in last month	0.12	0.09	-0.03	0.00	0.00	0.00	0.03	0.04	0.01
<b>Eat using devices (sc5deatdevi)</b>									
1 No use of adapted utensils in last month	99.69	99.72	0.03	99.86	99.86	0.00	99.45	99.45	0.00

2 Use of adapted utensils in last month	0.19	0.19	0.00	0.14	0.14	0.00	0.45	0.44	-0.01
3 DKRF If used adapted utensils in last month	0.00	0.00	0.00	0.00	0.00	0.00	0.07	0.07	0.00
8 Not done in last month	0.12	0.09	-0.03	0.00	0.00	0.00	0.03	0.03	0.00
<b>Eat with help (sc5deathelp)</b>									
1 No help eating in last month	97.74	97.65	-0.09	97.58	97.57	-0.01	96.90	96.87	-0.03
2 Had help eating in last month	1.94	2.08	0.14	2.42	2.43	0.01	3.02	3.05	0.03
3 DKRF If had help eating in last month	0.19	0.18	-0.01	0.00	0.00	0.00	0.05	0.05	0.00
8 Not done in last month	0.12	0.09	-0.03	0.00	0.00	0.00	0.03	0.03	0.00
<b>Bathe by self (sc5dbathsfd)</b>									
1 Did not do by self in last month	0.78	0.77	-0.01	1.87	1.93	0.06	3.09	3.06	-0.03
2 No Difficulty by self (and when using grab bars or tub seat)	91.38	91.15	-0.23	89.96	90.00	0.04	87.12	87.21	0.09
3 Difficulty by self (and when using grab bars or tub seat)	7.64	7.90	0.26	8.12	8.01	-0.11	9.55	9.53	-0.02
6 Did by self in last month/DKRF Difficulty	0.00	0.00	0.00	0.04	0.05	0.01	0.00	0.00	0.00
7 DKRF Did by self in last month/DKRF Difficulty	0.19	0.18	-0.01	0.00	0.00	0.00	0.24	0.20	-0.04
<b>Bathe using devices (sc5dbathdevi)</b>									
1 No use of grab bars or bath seats in last month	22.09	22.28	0.19	20.40	20.43	0.03	18.37	18.40	0.03
2 Use of grab bars or bath seats in last month	24.35	24.38	0.03	33.05	33.06	0.01	40.44	40.32	-0.12
3 DKRF If use of grab bars or bath seats in last month	0.19	0.18	-0.01	0.00	0.00	0.00	0.20	0.15	-0.05
4 DKRF If had grab bars or bath seats in last month	0.04	0.04	0.00	0.16	0.14	-0.02	0.05	0.05	0.00
9 No bars/seats/shower/tub or washes up other way	53.33	53.11	-0.22	46.38	46.37	-0.01	40.94	41.08	0.14
<b>Bathe with help (sc5dbathhelp)</b>									
1 No help bathing in last month	96.46	96.37	-0.09	95.66	95.56	-0.10	93.86	93.97	0.11
2 Had help bathing in last month	3.35	3.45	0.10	4.31	4.41	0.10	5.90	5.83	-0.07
3 DKRF If had help bathing in last month	0.19	0.18	-0.01	0.03	0.00	-0.03	0.24	0.20	-0.04
<b>Toilet by self (sc5dtoilsfd)</b>									
1 Did not do by self in last month	0.39	0.39	0.00	0.69	0.69	0.00	1.02	1.04	0.02
2 No Difficulty by self (and when using toileting devices)	95.15	95.07	-0.08	94.45	94.41	-0.04	93.11	93.18	0.07
3 Difficulty by self (and when using toileting devices)	4.17	4.26	0.09	4.76	4.80	0.04	5.70	5.65	-0.05
6 Did by self in last month/DKRF Difficulty	0.29	0.28	-0.01	0.05	0.05	0.00	0.00	0.00	0.00
7 DKRF Did by self in last month/DKRF Difficulty	0.00	0.00	0.00	0.05	0.05	0.00	0.17	0.13	-0.04
<b>Toilet using devices (sc5dtoildevi)</b>									
1 No use of toileting devices in last month	68.67	68.91	0.24	60.67	60.82	0.15	53.39	53.67	0.28
2 Use of toileting devices in last month	31.15	30.90	-0.25	39.19	39.03	-0.16	46.54	46.25	-0.29
3 DKRF of some and no use of other toileting devices in last month	0.18	0.18	0.00	0.14	0.15	0.01	0.07	0.07	0.00
<b>Toilet with help (sc5dtoilhelp)</b>									
1 No help toileting in last month	98.84	98.83	-0.01	98.65	98.61	-0.04	97.02	97.11	0.09
2 Had help toileting in last month	1.16	1.17	0.01	1.31	1.34	0.03	2.76	2.71	-0.05
3 DKRF If had help toileting in last month	0.00	0.00	0.00	0.04	0.05	0.01	0.22	0.18	-0.04
<b>Dress by self (sc5ddressfd)</b>									
1 Did not do by self in last month	0.60	0.54	-0.06	1.24	1.23	-0.01	2.07	2.10	0.03
2 No Difficulty by self (and when using dressing devices)	88.00	87.92	-0.08	85.75	85.82	0.07	85.24	85.25	0.01
3 Difficulty by self (and when using dressing devices)	10.68	10.80	0.12	12.75	12.69	-0.06	12.33	12.33	0.00
6 Did by self in last month/DKRF Difficulty	0.00	0.00	0.00	0.18	0.17	-0.01	0.09	0.09	0.00
7 DKRF Did by self in last month/DKRF Difficulty	0.19	0.18	-0.01	0.00	0.00	0.00	0.22	0.18	-0.04
8 Not done in last month	0.53	0.56	0.03	0.08	0.09	0.01	0.05	0.05	0.00

<b>Dress using devices (sc5ddresdevi)</b>									
1 No use of dressing devices in last month	97.02	96.84	-0.18	97.08	97.08	0.00	96.44	96.47	0.03
2 Use of dressing devices in last month	2.25	2.42	0.17	2.79	2.78	-0.01	3.50	3.47	-0.03
3 DKRF If use of dressing devices in last month	0.00	0.00	0.00	0.05	0.05	0.00	0.00	0.00	0.00
8 Not done in last month	0.53	0.56	0.03	0.08	0.09	0.01	0.05	0.05	0.00
9 DKRF If dressed in last month	0.19	0.18	-0.01	0.00	0.00	0.00	0.00	0.00	0.00
<b>Dress with help (sc5ddreshelp)</b>									
1 No help dressing in last month	92.72	92.52	-0.20	91.86	91.91	0.05	89.61	89.66	0.05
2 Had help dressing in last month	6.55	6.74	0.19	8.05	8.00	-0.05	10.10	10.09	-0.01
3 DKRF If had help dressing in last month	0.00	0.00	0.00	0.00	0.00	0.00	0.24	0.20	-0.04
8 Not done in last month	0.53	0.56	0.03	0.08	0.09	0.01	0.05	0.05	0.00
9 DKRF If dressed in last month	0.19	0.18	-0.01	0.00	0.00	0.00	0.00	0.00	0.00
<b>Laundry by self (ha5dlaunself)</b>									
1 Did not do by self in last month	33.07	33.03	-0.04	33.46	33.30	-0.16	35.00	35.03	0.03
2 Did by self in last month/No Difficulty	60.50	60.55	0.05	60.67	61.00	0.33	59.19	59.27	0.08
3 Did by self in last month/Difficulty	6.26	6.25	-0.01	5.69	5.51	-0.18	5.35	5.26	-0.09
4 DKRF Did by self in last month/No Difficulty	0.00	0.00	0.00	0.00	0.00	0.00	0.00	0.00	0.00
7 DKRF Did by self in last month/DKRF Difficulty	0.14	0.14	0.00	0.08	0.09	0.01	0.17	0.13	-0.04
8 Not done in last month	0.03	0.03	0.00	0.09	0.09	0.00	0.29	0.31	0.02
<b>Shopping by self (ha5dshopsself)</b>									
1 Did not do by self in last month	27.97	28.42	0.45	30.93	30.95	0.02	37.24	37.17	-0.07
2 Did by self in last month/No Difficulty	63.07	62.71	-0.36	62.04	62.19	0.15	53.82	54.03	0.21
3 Did by self in last month/Difficulty	8.86	8.78	-0.08	6.41	6.28	-0.13	8.54	8.40	-0.14
7 DKRF Did by self in last month/DKRF Difficulty	0.09	0.09	0.00	0.00	0.00	0.00	0.00	0.00	0.00
8 Not done in last month	0.00	0.00	0.00	0.61	0.58	-0.03	0.40	0.40	0.00
<b>Meals by self (ha5dmealsself)</b>									
1 Did not do by self in last month	23.47	23.46	-0.01	24.00	24.10	0.10	30.60	30.58	-0.02
2 Did by self in last month/No Difficulty	68.23	68.23	0.00	66.89	66.81	-0.08	60.39	60.47	0.08
3 Did by self in last month/Difficulty	7.98	8.01	0.03	8.57	8.59	0.02	8.49	8.42	-0.07
4 DKRF Did by self in last month/No Difficulty	0.00	0.00	0.00	0.00	0.00	0.00	0.00	0.00	0.00
5 DKRF Did by self in last month/Difficulty	0.00	0.00	0.00	0.07	0.07	0.00	0.00	0.00	0.00
6 Did by self in last month/DKRF Difficulty	0.00	0.00	0.00	0.00	0.00	0.00	0.09	0.09	0.00
7 DKRF Did by self in last month/DKRF Difficulty	0.00	0.00	0.00	0.00	0.00	0.00	0.00	0.00	0.00
8 Not done in last month	0.32	0.30	-0.02	0.47	0.43	-0.04	0.43	0.44	0.01
<b>Banking by self (ha5dbanksself)</b>									
1 Did not do by self in last month	26.33	26.52	0.19	25.63	25.43	-0.20	33.49	33.45	-0.04
2 Did by self in last month/No Difficulty	68.71	68.43	-0.28	68.65	68.84	0.19	61.66	61.65	-0.01
3 Did by self in last month/Difficulty	4.09	4.17	0.08	5.04	5.09	0.05	4.55	4.61	0.06
4 DKRF Did by self in last month/No Difficulty	0.27	0.27	0.00	0.23	0.18	-0.05	0.02	0.02	0.00
6 Did by self in last month/DKRF Difficulty	0.00	0.00	0.00	0.00	0.00	0.00	0.00	0.00	0.00
7 DKRF Did by self in last month/DKRF Difficulty	0.27	0.24	-0.03	0.16	0.18	0.02	0.00	0.00	0.00
8 Not done in last month	0.33	0.37	0.04	0.29	0.28	-0.01	0.28	0.27	-0.01
<b>Walk 6 blocks (pc5walk6blks)</b>									
-8 Don't Know	0.62	0.67	0.05	1.01	1.05	0.04	1.70	1.70	0.00
-7 Refused	0.00	0.00	0.00	0.00	0.00	0.00	0.03	0.03	0.00

1 Yes	80.84	80.74	-0.10	74.70	74.83	0.13	65.39	65.72	0.33
2 No	18.54	18.59	0.05	24.29	24.12	-0.17	32.87	32.55	-0.32
<b>Walk 3 blocks (pc5walk3blks)</b>									
-8 Don't Know	0.26	0.27	0.01	0.64	0.63	-0.01	0.63	0.61	-0.02
-7 Refused	0.00	0.00	0.00	0.00	0.00	0.00	0.00	0.00	0.00
-1 Inapplicable	80.84	80.74	-0.10	74.70	74.83	0.13	65.39	65.72	0.33
1 Yes	5.16	5.12	-0.04	7.53	7.41	-0.12	7.96	8.02	0.06
2 No	13.74	13.87	0.13	17.13	17.13	0.00	26.02	25.65	-0.37
<b>Walk up 20 stairs (pc5up20stair)</b>									
-8 Don't Know	0.50	0.49	-0.01	1.01	1.02	0.01	1.68	1.64	-0.04
1 Yes	84.66	84.53	-0.13	80.94	80.90	-0.04	73.42	73.59	0.17
2 No	14.84	14.98	0.14	18.05	18.08	0.03	24.90	24.77	-0.13
<b>Walk up 10 stairs (pc5up10stair)</b>									
-8 Don't Know	0.21	0.22	0.01	0.88	0.90	0.02	1.56	1.50	-0.06
-1 Inapplicable	84.66	84.53	-0.13	80.94	80.90	-0.04	73.42	73.59	0.17
1 Yes	6.25	6.17	-0.08	7.43	7.41	-0.02	8.67	8.67	0.00
2 No	8.88	9.08	0.20	10.75	10.78	0.03	16.35	16.24	-0.11
<b>Carry 20 pounds (pc5car20pnds)</b>									
-8 Don't Know	0.41	0.39	-0.02	0.45	0.47	0.02	0.89	0.85	-0.04
1 Yes	84.24	83.93	-0.31	80.68	80.76	0.08	72.61	72.80	0.19
2 No	15.34	15.68	0.34	18.87	18.77	-0.10	26.50	26.35	-0.15
<b>Carry 10 pounds (pc5car10pnds)</b>									
-8 Don't Know	0.27	0.23	-0.04	0.15	0.17	0.02	0.78	0.76	-0.02
-1 Inapplicable	84.24	83.93	-0.31	80.68	80.76	0.08	72.61	72.80	0.19
1 Yes	7.09	7.13	0.04	8.08	8.13	0.05	10.57	10.55	-0.02
2 No	8.40	8.71	0.31	11.09	10.94	-0.15	16.04	15.89	-0.15
<b>Get down on knees (pc5geonknees)</b>									
-8 Don't Know	0.71	0.72	0.01	0.93	0.90	-0.03	1.28	1.23	-0.05
-7 Refused	0.10	0.10	0.00	0.00	0.00	0.00	0.00	0.00	0.00
1 Yes	58.04	57.66	-0.38	49.92	50.06	0.14	40.47	40.66	0.19
2 No	41.15	41.51	0.36	49.15	49.04	-0.11	58.25	58.11	-0.14
<b>Bend over (pc5bendover)</b>									
-8 Don't Know	0.00	0.00	0.00	0.36	0.33	-0.03	0.45	0.45	0.00
-1 Inapplicable	58.04	57.66	-0.38	49.92	50.06	0.14	40.47	40.66	0.19
1 Yes	31.48	31.75	0.27	36.21	36.26	0.05	40.12	39.97	-0.15
2 No	10.48	10.58	0.10	13.51	13.35	-0.16	18.96	18.92	-0.04
<b>Lift heavy object above head (pc5hvovbrhd)</b>									
-8 Don't Know	0.48	0.52	0.04	0.75	0.76	0.01	1.69	1.69	0.00
1 Yes	89.37	89.21	-0.16	85.80	85.90	0.10	79.92	80.03	0.11
2 No	10.15	10.27	0.12	13.45	13.33	-0.12	18.39	18.27	-0.12
<b>Reach overhead (pc5rechovrhd)</b>									
-8 Don't Know	0.24	0.23	-0.01	0.09	0.09	0.00	0.58	0.57	-0.01
-1 Inapplicable	89.37	89.21	-0.16	85.80	85.90	0.10	79.92	80.03	0.11
1 Yes	4.30	4.45	0.15	6.81	6.81	0.00	8.69	8.65	-0.04
2 No	6.09	6.11	0.02	7.30	7.19	-0.11	10.80	10.75	-0.05



<b>Open sealed jar with hands (pc5opnjarwhd)</b>									
-8 Don't Know	0.04	0.05	0.01	0.44	0.45	0.01	0.38	0.38	0.00
1 Yes	82.70	82.53	-0.17	78.62	78.67	0.05	76.16	76.28	0.12
2 No	17.26	17.42	0.16	20.93	20.88	-0.05	23.46	23.34	-0.12
<b>Grasp small objects (pc5grpsmobj)</b>									
-8 Don't Know	0.19	0.18	-0.01	0.06	0.06	0.00	0.14	0.14	0.00
-1 Inapplicable	82.70	82.53	-0.17	78.62	78.67	0.05	76.16	76.28	0.12
1 Yes	15.13	15.20	0.07	18.58	18.59	0.01	19.86	19.75	-0.11
2 No	1.97	2.09	0.12	2.74	2.68	-0.06	3.84	3.83	-0.01

	NHATS Round 5			NHATS Round 5			NHATS Round 5		
	80-84			85-89			90+		
	Original (%)	Revised (%)	Change	Original (%)	Revised (%)	Change	Original (%)	Revised (%)	Change
<b>Gender (r5dgender)</b>									
Male									
Female	41.60	41.54	-0.06	39.42	39.42	0.00	30.37	30.54	0.17
<b>Race (r15dracehisp)</b>	58.40	58.46	0.06	60.58	60.58	0.00	69.63	69.46	-0.17
White, not Hispanic									
Black, not Hispanic	80.00	79.87	-0.13	81.16	81.09	-0.07	80.91	80.82	-0.09
Other	7.80	7.76	-0.04	6.86	6.88	0.02	7.43	7.36	-0.07
Hispanic	3.59	3.62	0.03	3.74	3.74	0.00	1.90	1.96	0.06
More than one race	6.75	6.86	0.11	5.81	5.86	0.05	5.23	5.18	-0.05
Don't know, refused	0.05	0.05	0.00	0.03	0.03	0.00	0.05	0.05	0.00
<b>Dementia Status (r5demclas)</b>	1.81	1.84	0.03	2.40	2.40	0.00	4.47	4.62	0.15
Probable dementia									
No dementia	15.77	15.67	-0.10	22.50	22.50	0.00	34.47	34.54	0.07
<b>Residential Care Status (r5dresid)</b>	84.23	84.33	0.10	77.50	77.50	0.00	65.53	65.46	-0.07
Community									
Residential care not nursing home (SP interview)	90.94	90.97	0.03	84.43	84.38	-0.05	70.43	70.32	-0.11
Nursing home (SP interview)	7.98	7.95	-0.03	13.46	13.53	0.07	24.47	24.57	0.10
<b>Living Arrangement (hh5dlvngarrg)</b>	1.07	1.08	0.01	2.10	2.08	-0.02	5.10	5.11	0.01
Alone									
With spouse/partner only	37.45	37.66	0.21	48.18	48.00	-0.18	56.72	56.55	-0.17
With spouse/partner and others	37.63	37.47	-0.16	27.36	27.50	0.14	15.47	15.50	0.03
With others only	8.23	8.15	-0.08	5.45	5.52	0.07	3.04	2.98	-0.06
<b>Go outside by self (mo5doutsfdf)</b>	16.69	16.72	0.03	19.00	18.98	-0.02	24.77	24.97	0.20
1 Did not do by self in last month									
2 Did by self in last month/No Difficulty	8.06	7.86	-0.20	11.01	10.98	-0.03	29.60	29.40	-0.20
3 Did by self in last month/Difficulty	75.18	75.44	0.26	70.62	70.89	0.27	49.78	50.15	0.37
4 DKRF Did by self in last month/No Difficulty	14.41	14.36	-0.05	15.49	15.25	-0.24	14.01	13.99	-0.02
5 DKRF Did by self in last month/Difficulty	0.27	0.27	0.00	0.00	0.00	0.00	0.00	0.00	0.00
6 Did by self in last month/DKRF Difficulty	0.05	0.05	0.00	0.00	0.00	0.00	0.44	0.41	-0.03
7 DKRF Did by self in last month/DKRF Difficulty	0.05	0.05	0.00	0.00	0.00	0.00	0.00	0.00	0.00
8 Not done in last month	0.00	0.00	0.00	0.00	0.00	0.00	0.30	0.28	-0.02
<b>Go outside using devices (mo5doutdevi)</b>	1.97	1.97	0.00	2.88	2.88	0.00	5.87	5.77	-0.10
1 No use of devices to go outside in last month									
2 Use of devices to go outside in last month	63.31	63.58	0.27	52.55	52.38	-0.17	31.39	31.69	0.30
3 DKRF If used devices to go outside in last month	34.72	34.45	-0.27	44.57	44.74	0.17	62.73	62.54	-0.19
4 DKRF If used devices in last month	0.00	0.00	0.00	0.00	0.00	0.00	0.00	0.00	0.00
8 Not done in last month	0.00	0.00	0.00	0.00	0.00	0.00	0.00	0.00	0.00
<b>Go outside using help (mo5douthelp)</b>	1.97	1.97	0.00	2.88	2.88	0.00	5.87	5.77	-0.10
1 No help to go outside in last month									
2 Had help to go outside in last month	83.46	83.79	0.33	75.41	75.48	0.07	52.72	52.94	0.22
3 DKRF If had help to go outside in last month	14.24	13.92	-0.32	21.71	21.64	-0.07	41.10	41.01	-0.09

8 Not done in last month	0.32	0.32	0.00	0.00	0.00	0.00	0.30	0.28	-0.02
<b>Move inside by self (mo5disndsfd)</b>	1.97	1.97	0.00	2.88	2.88	0.00	5.87	5.77	-0.10
1 Did not do by self in last month									
2 Did by self in last month/No Difficulty	2.90	2.79	-0.11	3.90	3.92	0.02	10.59	10.64	0.05
3 Did by self in last month/Difficulty	79.94	80.26	0.32	72.14	72.18	0.04	63.83	63.93	0.10
4 DKRF Did by self in last month/No Difficulty	16.50	16.29	-0.21	23.41	23.35	-0.06	24.16	24.03	-0.13
6 Did by self in last month/DKRF Difficulty	0.27	0.27	0.00	0.00	0.00	0.00	0.05	0.06	0.01
7 DKRF Did by self in last month/DKRF Difficulty	0.06	0.06	0.00	0.00	0.00	0.00	0.00	0.00	0.00
8 Not done in last month	0.00	0.00	0.00	0.00	0.00	0.00	0.17	0.15	-0.02
<b>Move inside using devices (mo5dinsddevi)</b>	0.33	0.33	0.00	0.55	0.55	0.00	1.19	1.19	0.00
1 No use of devices inside in last month									
2 Use of devices inside in last month	70.38	70.70	0.32	58.81	58.59	-0.22	37.82	38.06	0.24
3 DKRF If used devices inside in last month	29.01	28.68	-0.33	40.64	40.86	0.22	60.80	60.57	-0.23
4 DKRF If used devices in last month	0.28	0.29	0.01	0.00	0.00	0.00	0.19	0.18	-0.01
8 Not done in last month	0.00	0.00	0.00	0.00	0.00	0.00	0.00	0.00	0.00
<b>Move inside with help (mo5dinsdhelp)</b>	0.33	0.33	0.00	0.55	0.55	0.00	1.19	1.19	0.00
1 No help to go around inside in last month									
2 Had help to go around inside in last month	90.24	90.41	0.17	87.13	87.11	-0.02	71.43	71.49	0.06
3 DKRF If had help to go around inside in last month	9.17	8.99	-0.18	12.32	12.33	0.01	27.15	27.11	-0.04
8 Not done in last month	0.27	0.27	0.00	0.00	0.00	0.00	0.23	0.21	-0.02
<b>Get out of bed by self (mo5dbedsfd)</b>	0.32	0.33	0.01	0.55	0.55	0.00	1.19	1.19	0.00
1 Did not do by self in last month									
2 Did by self in last month/No Difficulty	2.32	2.26	-0.06	3.98	4.01	0.03	9.01	9.02	0.01
3 Did by self in last month/Difficulty	77.11	77.34	0.23	73.40	73.48	0.08	61.82	61.79	-0.03
4 DKRF Did by self in last month/No Difficulty	20.28	20.10	-0.18	22.21	22.10	-0.11	28.12	28.25	0.13
5 DKRF Did by self in last month/Difficulty	0.10	0.09	-0.01	0.00	0.00	0.00	0.26	0.25	-0.01
6 Did by self in last month/DKRF Difficulty	0.00	0.00	0.00	0.00	0.00	0.00	0.00	0.00	0.00
7 DKRF Did by self in last month/DKRF Difficulty	0.08	0.08	0.00	0.06	0.06	0.00	0.00	0.00	0.00
<b>Get out of bed using devices (mo5dbeddevi)</b>	0.11	0.13	0.02	0.34	0.34	0.00	0.79	0.69	-0.10
1 No use of cane or walker to get out of bed in last month									
2 Use of cane or walker to get out of bed in last month	84.91	85.12	0.21	78.71	78.64	-0.07	67.80	68.06	0.26
3 DKRF If Used cane or walker to get out of bed in last month	15.04	14.82	-0.22	21.11	21.15	0.04	30.90	30.77	-0.13
4 DKRF If used cane or walker in last month	0.05	0.05	0.00	0.18	0.21	0.03	1.30	1.17	-0.13
<b>Get out of bed with help (mo5dbedhelp)</b>	0.00	0.00	0.00	0.00		0.00	0.00	0.00	0.00
1 No help to get out of bed in last month									
2 Had help to get out of bed in last month	92.56	92.78	0.22	89.55	89.43	-0.12	79.69	79.71	0.02
3 DKRF If had help to get out of bed in last month	7.23	7.00	-0.23	10.10	10.22	0.12	19.32	19.41	0.09
<b>Eat by self (sc5deatsfd)</b>	0.21	0.22	0.01	0.34	0.34	0.00	0.99	0.88	-0.11
1 Did not do by self in last month									
2 No Difficulty by self (and when using utensils)	0.70	0.69	-0.01	0.54	0.52	-0.02	2.69	2.70	0.01
3 Difficulty by self (and when using utensils)	93.46	93.56	0.10	89.45	89.37	-0.08	83.80	83.68	-0.12
6 Did by self in last month/DKRF Difficulty	5.52	5.43	-0.09	9.96	10.06	0.10	13.28	13.39	0.11
7 DKRF Did by self in last month/DKRF Difficulty	0.18	0.18	0.00	0.00	0.00	0.00	0.23	0.23	0.00
8 Not done in last month	0.00	0.00	0.00	0.00	0.00	0.00	0.00	0.00	0.00
<b>Eat using devices (sc5deatdevi)</b>	0.13	0.14	0.01	0.05	0.05	0.00	0.00	0.00	0.00

1 No use of adapted utensils in last month									
2 Use of adapted utensils in last month	99.05	99.09	0.04	99.31	99.31	0.00	98.00	98.02	0.02
3 DKRF If used adapted utensils in last month	0.82	0.78	-0.04	0.64	0.64	0.00	1.88	1.85	-0.03
8 Not done in last month	0.00	0.00	0.00	0.00	0.00	0.00	0.12	0.12	0.00
<b>Eat with help (sc5deathelp)</b>	0.13	0.13	0.00	0.05	0.05	0.00	0.00	0.00	0.00
1 No help eating in last month									
2 Had help eating in last month	93.23	93.40	0.17	89.38	89.28	-0.10	81.92	81.89	-0.03
3 DKRF If had help eating in last month	6.57	6.40	-0.17	10.57	10.67	0.10	17.80	17.77	-0.03
8 Not done in last month	0.06	0.06	0.00	0.00	0.00	0.00	0.28	0.34	0.06
<b>Bathe by self (sc5dbathsfd)</b>	0.13	0.14	0.01	0.05	0.05	0.00	0.00	0.00	0.00
1 Did not do by self in last month									
2 No Difficulty by self (and when using grab bars or tub seat)	6.94	6.85	-0.09	10.07	10.13	0.06	23.31	23.28	-0.03
3 Difficulty by self (and when using grab bars or tub seat)	80.21	80.50	0.29	75.77	75.67	-0.10	56.78	56.92	0.14
6 Did by self in last month/DKRF Difficulty	12.11	11.93	-0.18	13.92	13.95	0.03	18.78	18.76	-0.02
7 DKRF Did by self in last month/DKRF Difficulty	0.27	0.24	-0.03	0.05	0.06	0.01	0.84	0.73	-0.11
<b>Bathe using devices (sc5dbathdevi)</b>	0.47	0.48	0.01	0.19	0.19	0.00	0.29	0.31	0.02
1 No use of grab bars or bath seats in last month									
2 Use of grab bars or bath seats in last month	15.13	15.16	0.03	10.22	10.06	-0.16	6.48	6.49	0.01
3 DKRF If use of grab bars or bath seats in last month	51.68	51.62	-0.06	56.42	56.71	0.29	61.88	61.77	-0.11
4 DKRF If had grab bars or bath seats in last month	0.58	0.59	0.01	0.36	0.35	-0.01	0.96	0.98	0.02
9 No bars/seats/shower/tub or washes up other way	0.18	0.18	0.00	0.18	0.19	0.01	0.13	0.13	0.00
<b>Bathe with help (sc5dbathhelp)</b>	32.43	32.45	0.02	32.82	32.69	-0.13	30.54	30.63	0.09
1 No help bathing in last month									
2 Had help bathing in last month	87.39	87.61	0.22	82.77	82.65	-0.12	64.03	64.19	0.16
3 DKRF If had help bathing in last month	12.13	11.92	-0.21	17.03	17.16	0.13	35.68	35.50	-0.18
<b>Toilet by self (sc5dtoilsfd)</b>	0.47	0.48	0.01	0.20	0.19	-0.01	0.29	0.31	0.02
1 Did not do by self in last month									
2 No Difficulty by self (and when using toileting devices)	1.73	1.66	-0.07	4.24	4.34	0.10	8.39	8.40	0.01
3 Difficulty by self (and when using toileting devices)	89.55	89.66	0.11	85.24	85.09	-0.15	73.83	74.19	0.36
6 Did by self in last month/DKRF Difficulty	8.44	8.40	-0.04	10.34	10.39	0.05	16.74	16.47	-0.27
7 DKRF Did by self in last month/DKRF Difficulty	0.25	0.25	0.00	0.18	0.18	0.00	0.18	0.15	-0.03
<b>Toilet using devices (sc5dtoildevi)</b>	0.03	0.03	0.00	0.00	0.00	0.00	0.86	0.78	-0.08
1 No use of toileting devices in last month									
2 Use of toileting devices in last month	44.89	45.03	0.14	34.87	34.89	0.02	19.64	19.82	0.18
3 DKRF of some and no use of other toileting devices in last month	54.55	54.41	-0.14	64.97	64.95	-0.02	79.67	79.54	-0.13
<b>Toilet with help (sc5dtoilhelp)</b>	0.56	0.56	0.00	0.16	0.16	0.00	0.69	0.64	-0.05
1 No help toileting in last month									
2 Had help toileting in last month	94.69	94.85	0.16	91.94	91.79	-0.15	83.64	83.70	0.06
3 DKRF If had help toileting in last month	5.22	5.06	-0.16	7.92	8.07	0.15	15.24	15.19	-0.05
<b>Dress by self (sc5dressfd)</b>	0.09	0.08	-0.01	0.14	0.14	0.00	1.12	1.10	-0.02
1 Did not do by self in last month									
2 No Difficulty by self (and when using dressing devices)	3.30	3.23	-0.07	5.82	5.81	-0.01	14.32	14.26	-0.06
3 Difficulty by self (and when using dressing devices)	78.21	78.32	0.11	72.63	72.53	-0.10	56.06	56.11	0.05
6 Did by self in last month/DKRF Difficulty	17.73	17.73	0.00	20.80	20.89	0.09	27.64	27.65	0.01
7 DKRF Did by self in last month/DKRF Difficulty	0.12	0.10	-0.02	0.19	0.20	0.01	0.46	0.44	-0.02



-7 Refused	2.29	2.27	-0.02	1.95	1.94	-0.01	2.20	2.28	0.08
1 Yes	0.00	0.00	0.00	0.17	0.17	0.00	0.00	0.00	0.00
2 No	52.09	52.31	0.22	38.52	38.33	-0.19	20.15	20.28	0.13
<b>Walk 3 blocks (pc5walk3blks)</b>	45.62	45.42	-0.20	59.35	59.56	0.21	77.65	77.44	-0.21
-8 Don't Know									
-7 Refused	1.50	1.54	0.04	1.05	1.06	0.01	1.65	1.69	0.04
-1 Inapplicable	0.00	0.00	0.00	0.17	0.17	0.00	0.00	0.00	0.00
1 Yes	52.09	52.31	0.22	38.52	38.33	-0.19	20.15	20.28	0.13
2 No	9.65	9.65	0.00	10.80	10.84	0.04	8.74	8.74	0.00
<b>Walk up 20 stairs (pc5up20stair)</b>	36.76	36.50	-0.26	49.46	49.60	0.14	69.46	69.28	-0.18
-8 Don't Know									
1 Yes	2.50	2.46	-0.04	1.23	1.23	0.00	2.14	2.22	0.08
2 No	59.52	59.86	0.34	51.44	51.39	-0.05	28.88	28.95	0.07
<b>Walk up 10 stairs (pc5up10stair)</b>	37.97	37.68	-0.29	47.33	47.38	0.05	68.98	68.83	-0.15
-8 Don't Know									
-1 Inapplicable	1.58	1.64	0.06	0.82	0.83	0.01	1.30	1.38	0.08
1 Yes	59.52	59.86	0.34	51.44	51.39	-0.05	28.88	28.95	0.07
2 No	11.98	12.02	0.04	11.02	10.98	-0.04	13.01	13.07	0.06
<b>Carry 20 pounds (pc5car20pnds)</b>	26.91	26.48	-0.43	36.72	36.80	0.08	56.81	56.60	-0.21
-8 Don't Know									
1 Yes	1.52	1.51	-0.01	1.58	1.60	0.02	2.56	2.71	0.15
2 No	58.88	59.15	0.27	50.23	50.15	-0.08	25.80	25.77	-0.03
<b>Carry 10 pounds (pc5car10pnds)</b>	39.60	39.34	-0.26	48.19	48.25	0.06	71.64	71.52	-0.12
-8 Don't Know									
-1 Inapplicable	0.76	0.74	-0.02	0.63	0.63	0.00	1.43	1.47	0.04
1 Yes	58.88	59.15	0.27	50.23	50.14	-0.09	25.80	25.77	-0.03
2 No	14.53	14.55	0.02	14.03	14.23	0.20	14.39	14.39	0.00
<b>Get down on knees (pc5geonknees)</b>	25.83	25.56	-0.27	35.11	35.00	-0.11	58.38	58.37	-0.01
-8 Don't Know									
-7 Refused	1.40	1.44	0.04	1.67	1.69	0.02	2.25	2.21	-0.04
1 Yes	0.00	0.00	0.00	0.00	0.00	0.00	0.00	0.00	0.00
2 No	31.73	31.87	0.14	23.23	22.95	-0.28	18.15	18.21	0.06
<b>Bend over (pc5bendover)</b>	66.87	66.69	-0.18	75.10	75.36	0.26	79.60	79.58	-0.02
-8 Don't Know									
-1 Inapplicable	0.46	0.44	-0.02	0.38	0.39	0.01	1.22	1.22	0.00
1 Yes	31.73	31.87	0.14	23.23	22.94	-0.29	18.15	18.21	0.06
2 No	42.96	43.19	0.23	43.56	43.96	0.40	33.78	33.92	0.14
<b>Lift heavy object above head (pc5hvobovrhd)</b>	24.85	24.50	-0.35	32.83	32.71	-0.12	46.85	46.65	-0.20
-8 Don't Know									
1 Yes	2.04	2.09	0.05	2.44	2.41	-0.03	3.34	3.34	0.00
2 No	73.47	73.66	0.19	66.45	66.35	-0.10	45.25	45.35	0.10
<b>Reach overhead (pc5rechovrhd)</b>	24.49	24.25	-0.24	31.11	31.24	0.13	51.41	51.31	-0.10
-8 Don't Know									
-1 Inapplicable	0.50	0.52	0.02	0.43	0.45	0.02	1.51	1.46	-0.05
1 Yes	73.47	73.66	0.19	66.45	66.35	-0.10	45.25	45.35	0.10

2 No	9.59	9.57	-0.02	11.45	11.46	0.01	12.58	12.63	0.05
<b>Open sealed jar with hands (pc5opnjarwhd)</b>	16.43	16.24	-0.19	21.67	21.74	0.07	40.66	40.55	-0.11
-8 Don't Know									
1 Yes	0.87	0.87	0.00	0.98	1.03	0.05	2.04	2.00	-0.04
2 No	65.33	65.34	0.01	61.78	61.73	-0.05	43.10	43.27	0.17
<b>Grasp small objects (pc5grpsmobj)</b>	33.80	33.79	-0.01	37.24	37.23	-0.01	54.86	54.73	-0.13
-8 Don't Know	0.37	0.37	0.00	0.00	0.00	0.00	0.21	0.21	0.00
-1 Inapplicable	65.33	65.34	0.01	61.78	61.73	-0.05	43.10	43.27	0.17
1 Yes	29.25	29.23	-0.02	33.35	33.33	-0.02	44.92	44.85	-0.07
2 No	5.05	5.06	0.01	4.87	4.93	0.06	11.77	11.67	-0.10

	NHATS Round 6			NHATS Round 6			NHATS Round 6		
	65-69			70-74			75-79		
	Original (%)	Revised (%)	Change	Original (%)	Revised (%)	Change	Original (%)	Revised (%)	Change
<b>Gender (r5dgender)</b>									
Male	47.92	47.96	0.04	46.06	46.12	0.06	44.88	45.12	0.24
Female	52.08	52.04	-0.04	53.94	53.88	-0.06	55.12	54.88	-0.24
<b>Race (r15dracehisp)</b>									
White, not Hispanic	77.54	77.08	-0.46	75.44	75.60	0.16	79.74	79.59	-0.15
Black, not Hispanic	8.31	8.26	-0.05	8.35	8.33	-0.02	8.80	8.79	-0.01
Other	3.85	4.22	0.37	4.15	4.34	0.19	2.92	2.98	0.06
Hispanic	7.93	7.86	-0.07	8.04	7.77	-0.27	6.41	6.48	0.07
More than one race	0.18	0.20	0.02	0.27	0.20	-0.07	0.06	0.06	0.00
Don't know, refused	2.19	2.37	0.18	3.75	3.76	0.01	2.07	2.09	0.02
<b>Dementia Status (r6demclas)</b>									
Probable dementia	2.53	2.62	0.09	4.81	4.73	-0.08	7.78	7.95	0.17
No dementia	97.47	97.38	-0.09	95.19	95.27	0.08	92.22	92.05	-0.17
<b>Residential Care Status (r6dresid)</b>									
Community	98.90	98.86	-0.04	97.77	97.76	-0.01	95.53	95.51	-0.02
Residential care not nursing home (SP interview)	0.86	0.93	0.07	1.78	1.84	0.06	3.41	3.43	0.02
Nursing home (SP interview)	0.24	0.21	-0.03	0.45	0.40	-0.05	1.06	1.06	0.00
<b>Living Arrangement (hh6dlvngarrg)</b>									
Alone	23.43	23.43	0.00	23.13	23.34	0.21	32.80	32.81	0.01
With spouse/partner only	50.50	49.83	-0.67	51.49	51.04	-0.45	42.97	43.21	0.24
With spouse/partner and others	13.75	13.94	0.19	11.99	12.33	0.34	9.78	9.83	0.05
With others only	12.32	12.80	0.48	13.39	13.30	-0.09	14.45	14.15	-0.30
<b>Go outside by self (mo6doutsfdf)</b>									
1 Did not do by self in last month	1.22	1.33	0.11	2.41	2.43	0.02	3.29	3.32	0.03
2 Did by self in last month/No Difficulty	87.83	87.51	-0.32	87.33	87.54	0.21	84.90	84.81	-0.09
3 Did by self in last month/Difficulty	10.43	10.64	0.21	9.39	9.18	-0.21	10.43	10.36	-0.07
4 DKRF Did by self in last month/No Difficulty	0.00	0.00	0.00	0.00	0.00	0.00	0.00	0.00	0.00
5 DKRF Did by self in last month/Difficulty	0.00	0.00	0.00	0.00	0.00	0.00	0.07	0.06	-0.01
6 Did by self in last month/DKRF Difficulty	0.00	0.00	0.00	0.00	0.00	0.00	0.20	0.20	0.00
8 Not done in last month	0.51	0.52	0.01	0.87	0.86	-0.01	1.11	1.23	0.12
<b>Go outside using devices (mo6doutdevi)</b>									
1 No use of devices to go outside in last month	88.07	87.60	-0.47	84.58	84.66	0.08	78.26	78.42	0.16
2 Use of devices to go outside in last month	11.41	11.88	0.47	14.54	14.49	-0.05	20.63	20.35	-0.28
3 DKRF If used devices to go outside in last month	0.00	0.00	0.00	0.00	0.00	0.00	0.00	0.00	0.00
4 DKRF If used devices in last month	0.00	0.00	0.00	0.00	0.00	0.00	0.00	0.00	0.00
8 Not done in last month	0.51	0.52	0.01	0.87	0.86	-0.01	1.11	1.23	0.12
<b>Go outside using help (mo6douthelp)</b>									
1 No help to go outside in last month	95.12	94.77	-0.35	93.47	93.63	0.16	90.51	90.41	-0.10
2 Had help to go outside in last month	4.36	4.70	0.34	5.66	5.51	-0.15	8.31	8.29	-0.02
3 DKRF If had help to go outside in last month	0.00	0.00	0.00	0.00	0.00	0.00	0.07	0.06	-0.01
8 Not done in last month	0.51	0.52	0.01	0.87	0.86	-0.01	1.11	1.23	0.12



<b>Move inside by self (mo6disndsdf)</b>									
1 Did not do by self in last month	0.15	0.15	0.00	0.85	0.89	0.04	1.31	1.38	0.07
2 Did by self in last month/No Difficulty	86.76	86.25	-0.51	87.17	87.34	0.17	84.32	84.27	-0.05
3 Did by self in last month/Difficulty	12.91	13.43	0.52	11.79	11.57	-0.22	13.94	13.88	-0.06
5 DKRF Did by self in last month/Difficulty	0.00	0.00	0.00	0.00	0.00	0.00	0.00	0.00	0.00
6 Did by self in last month/DKRF Difficulty	0.00	0.00	0.00	0.02	0.03	0.01	0.12	0.14	0.02
7 DKRF Did by self in last month/DKRF Difficulty	0.00	0.00	0.00	0.00	0.00	0.00	0.05	0.06	0.01
8 Not done in last month	0.18	0.18	0.00	0.16	0.18	0.02	0.26	0.28	0.02
<b>Move inside using devices (mo6dinsddevi)</b>									
1 No use of devices inside in last month	90.93	90.63	-0.30	87.56	87.65	0.09	81.77	81.75	-0.02
2 Use of devices inside in last month	8.74	9.04	0.30	12.01	11.88	-0.13	17.82	17.82	0.00
3 DKRF If used devices inside in last month	0.15	0.16	0.01	0.27	0.30	0.03	0.15	0.15	0.00
4 DKRF If used devices in last month	0.00	0.00	0.00	0.00	0.00	0.00	0.00	0.00	0.00
8 Not done in last month	0.18	0.18	0.00	0.16	0.18	0.02	0.26	0.28	0.02
<b>Move inside with help (mo6dinsdhelp)</b>									
1 No help to go around inside in last month	97.13	97.23	0.10	94.51	94.56	0.05	94.14	93.99	-0.15
2 Had help to go around inside in last month	2.69	2.59	-0.10	5.32	5.26	-0.06	5.54	5.67	0.13
3 DKRF If had help to go around inside in last month	0.00	0.00	0.00	0.00	0.00	0.00	0.06	0.06	0.00
8 Not done in last month	0.18	0.18	0.00	0.16	0.18	0.02	0.26	0.28	0.02
<b>Get out of bed by self (mo6dbedsdf)</b>									
1 Did not do by self in last month	0.44	0.48	0.04	0.84	0.86	0.02	1.48	1.58	0.10
2 Did by self in last month/No Difficulty	83.01	82.54	-0.47	84.24	84.44	0.20	79.90	79.82	-0.08
3 Did by self in last month/Difficulty	16.55	16.97	0.42	14.82	14.62	-0.20	18.45	18.38	-0.07
4 DKRF Did by self in last month/No Difficulty	0.00	0.00	0.00	0.00	0.00	0.00	0.00	0.00	0.00
5 DKRF Did by self in last month/Difficulty	0.00	0.00	0.00	0.00	0.00	0.00	0.00	0.00	0.00
6 Did by self in last month/DKRF Difficulty	0.00	0.00	0.00	0.10	0.08	-0.02	0.00	0.00	0.00
7 DKRF Did by self in last month/DKRF Difficulty	0.00	0.00	0.00	0.00	0.00	0.00	0.17	0.23	0.06
<b>Get out of bed using devices (mo6dbeddevi)</b>									
1 No use of cane or walker to get out of bed in last month	96.07	95.92	-0.15	93.76	93.83	0.07	90.97	90.87	-0.10
2 Use of cane or walker to get out of bed in last month	3.93	4.08	0.15	6.24	6.17	-0.07	8.94	9.04	0.10
3 DKRF If Used cane or walker to get out of bed in last month	0.00	0.00	0.00	0.00	0.00	0.00	0.09	0.09	0.00
4 DKRF If used cane or walker in last month	0.00	0.00	0.00	0.00	0.00	0.00	0.00	0.00	0.00
<b>Get out of bed with help (mo6dbedhelp)</b>									
1 No help to get out of bed in last month	96.39	96.43	0.04	95.56	95.59	0.03	94.82	94.66	-0.16
2 Had help to get out of bed in last month	3.61	3.57	-0.04	4.44	4.41	-0.03	5.01	5.11	0.10
3 DKRF If had help to get out of bed in last month	0.00	0.00	0.00	0.00	0.00	0.00	0.17	0.23	0.06
<b>Eat by self (sc6deatsdf)</b>									
1 Did not do by self in last month	0.33	0.32	-0.01	0.54	0.53	-0.01	0.61	0.63	0.02
2 No Difficulty by self (and when using utensils)	97.62	97.45	-0.17	95.91	95.89	-0.02	95.55	95.37	-0.18
3 Difficulty by self (and when using utensils)	1.89	2.10	0.21	3.55	3.58	0.03	3.70	3.86	0.16
6 Did by self in last month/DKRF Difficulty	0.00	0.00	0.00	0.00	0.00	0.00	0.11	0.10	-0.01
8 Not done in last month	0.15	0.13	-0.02	0.00	0.00	0.00	0.03	0.04	0.01
<b>Eat using devices (sc6deatdevi)</b>									
1 No use of adapted utensils in last month	99.61	99.66	0.05	99.44	99.40	-0.04	99.22	99.17	-0.05
2 Use of adapted utensils in last month	0.24	0.21	-0.03	0.56	0.60	0.04	0.61	0.67	0.06



1 No use of dressing devices in last month	96.72	96.58	-0.14	96.90	96.86	-0.04	96.05	96.16	0.11
2 Use of dressing devices in last month	3.05	3.20	0.15	2.61	2.63	0.02	3.60	3.48	-0.12
3 DKRF If use of dressing devices in last month	0.00	0.00	0.00	0.00	0.00	0.00	0.00	0.00	0.00
8 Not done in last month	0.05	0.05	0.00	0.49	0.52	0.03	0.35	0.37	0.02
9 DKRF If dressed in last month	0.18	0.18	0.00	0.00	0.00	0.00	0.00	0.00	0.00
<b>Dress with help (sc6ddreshelp)</b>									
1 No help dressing in last month	91.65	91.24	-0.41	91.52	91.80	0.28	89.28	89.10	-0.18
2 Had help dressing in last month	8.12	8.54	0.42	7.99	7.69	-0.30	10.37	10.53	0.16
3 DKRF If had help dressing in last month	0.00	0.00	0.00	0.00	0.00	0.00	0.00	0.00	0.00
8 Not done in last month	0.05	0.05	0.00	0.49	0.52	0.03	0.35	0.37	0.02
9 DKRF If dressed in last month	0.18	0.18	0.00	0.00	0.00	0.00	0.00	0.00	0.00
<b>Laundry by self (ha6dlaunself)</b>									
1 Did not do by self in last month	32.09	32.51	0.42	35.00	34.61	-0.39	34.10	34.35	0.25
2 Did by self in last month/No Difficulty	62.09	61.67	-0.42	60.73	61.32	0.59	60.43	60.15	-0.28
3 Did by self in last month/Difficulty	5.82	5.82	0.00	4.26	4.07	-0.19	5.37	5.39	0.02
4 DKRF Did by self in last month/No Difficulty	0.00	0.00	0.00	0.00	0.00	0.00	0.00	0.00	0.00
8 Not done in last month	0.00	0.00	0.00	0.00	0.00	0.00	0.10	0.11	0.01
<b>Shopping by self (ha6dshopsself)</b>									
1 Did not do by self in last month	23.86	24.43	0.57	29.47	29.00	-0.47	33.55	33.46	-0.09
2 Did by self in last month/No Difficulty	68.66	68.22	-0.44	63.64	64.05	0.41	57.14	57.13	-0.01
3 Did by self in last month/Difficulty	7.48	7.36	-0.12	6.41	6.48	0.07	8.81	8.89	0.08
4 DKRF Did by self in last month/No Difficulty	0.00	0.00	0.00	0.00	0.00	0.00	0.00	0.00	0.00
6 Did by self in last month/DKRF Difficulty	0.00	0.00	0.00	0.00	0.00	0.00	0.05	0.05	0.00
7 DKRF Did by self in last month/DKRF Difficulty	0.00	0.00	0.00	0.00	0.00	0.00	0.02	0.02	0.00
8 Not done in last month	0.00	0.00	0.00	0.48	0.47	-0.01	0.43	0.45	0.02
<b>Meals by self (ha6dmealsself)</b>									
1 Did not do by self in last month	19.57	19.87	0.30	23.91	24.30	0.39	28.03	28.12	0.09
2 Did by self in last month/No Difficulty	72.47	72.00	-0.47	68.08	67.80	-0.28	61.46	61.48	0.02
3 Did by self in last month/Difficulty	7.70	7.89	0.19	7.33	7.24	-0.09	9.79	9.58	-0.21
5 DKRF Did by self in last month/Difficulty	0.00	0.00	0.00	0.00	0.00	0.00	0.11	0.11	0.00
6 Did by self in last month/DKRF Difficulty	0.00	0.00	0.00	0.12	0.09	-0.03	0.15	0.14	-0.01
7 DKRF Did by self in last month/DKRF Difficulty	0.00	0.00	0.00	0.12	0.16	0.04	0.00	0.00	0.00
8 Not done in last month	0.26	0.24	-0.02	0.44	0.41	-0.03	0.46	0.56	0.10
<b>Banking by self (ha6dbanksself)</b>									
1 Did not do by self in last month	26.15	26.55	0.40	28.26	28.16	-0.10	29.99	29.86	-0.13
2 Did by self in last month/No Difficulty	69.53	69.12	-0.41	67.04	67.29	0.25	64.52	64.75	0.23
3 Did by self in last month/Difficulty	3.79	3.72	-0.07	4.07	3.98	-0.09	5.19	5.10	-0.09
4 DKRF Did by self in last month/No Difficulty	0.00	0.00	0.00	0.17	0.18	0.01	0.10	0.10	0.00
6 Did by self in last month/DKRF Difficulty	0.00	0.00	0.00	0.00	0.00	0.00	0.00	0.00	0.00
7 DKRF Did by self in last month/DKRF Difficulty	0.30	0.32	0.02	0.20	0.17	-0.03	0.03	0.03	0.00
8 Not done in last month	0.23	0.29	0.06	0.26	0.22	-0.04	0.17	0.16	-0.01
<b>Walk 6 blocks (pc6walk6blks)</b>									
-8 Don't Know	1.01	1.08	0.07	0.95	0.93	-0.02	1.17	1.20	0.03
1 Yes	79.55	79.43	-0.12	75.92	75.81	-0.11	65.77	65.83	0.06
2 No	19.44	19.48	0.04	23.13	23.26	0.13	33.06	32.97	-0.09

<b>Walk 3 blocks (pc6walk3blks)</b>									
-8 Don't Know	0.26	0.31	0.05	0.76	0.75	-0.01	0.64	0.72	0.08
-1 Inapplicable	79.55	79.43	-0.12	75.92	75.81	-0.11	65.77	65.83	0.06
1 Yes	6.20	6.03	-0.17	6.04	5.90	-0.14	8.29	8.20	-0.09
2 No	13.98	14.22	0.24	17.27	17.54	0.27	25.29	25.25	-0.04
<b>Walk up 20 stairs (pc6up20stair)</b>									
-8 Don't Know	0.22	0.23	0.01	0.69	0.71	0.02	2.21	2.23	0.02
-7 Refused	0.00	0.00	0.00	0.00	0.00	0.00	0.00	0.00	0.00
1 Yes	85.05	84.60	-0.45	81.66	81.64	-0.02	72.78	72.87	0.09
2 No	14.73	15.17	0.44	17.65	17.66	0.01	25.01	24.90	-0.11
<b>Walk up 10 stairs (pc6up10stair)</b>									
-8 Don't Know	0.15	0.24	0.09	0.02	0.02	0.00	1.37	1.38	0.01
-1 Inapplicable	85.05	84.60	-0.45	81.66	81.64	-0.02	72.78	72.87	0.09
1 Yes	5.23	5.24	0.01	7.34	7.30	-0.04	10.10	10.16	0.06
2 No	9.57	9.92	0.35	10.98	11.05	0.07	15.75	15.59	-0.16
<b>Carry 20 pounds (pc6car20pnds)</b>									
-8 Don't Know	0.05	0.05	0.00	0.02	0.02	0.00	0.77	0.75	-0.02
1 Yes	84.00	83.34	-0.66	80.29	80.84	0.55	73.78	73.85	0.07
2 No	15.95	16.61	0.66	19.69	19.15	-0.54	25.45	25.40	-0.05
<b>Carry 10 pounds (pc6car10pnds)</b>									
-8 Don't Know	0.00	0.00	0.00	0.18	0.18	0.00	0.20	0.18	-0.02
-1 Inapplicable	84.00	83.34	-0.66	80.29	80.84	0.55	73.78	73.85	0.07
1 Yes	7.41	7.51	0.10	9.49	8.95	-0.54	10.66	10.73	0.07
2 No	8.59	9.15	0.56	10.04	10.04	0.00	15.36	15.25	-0.11
<b>Get down on knees (pc6geonknees)</b>									
-8 Don't Know	1.16	1.11	-0.05	0.73	0.73	0.00	1.15	1.18	0.03
1 Yes	55.19	54.41	-0.78	48.88	48.93	0.05	39.33	39.62	0.29
2 No	43.65	44.48	0.83	50.38	50.34	-0.04	59.52	59.20	-0.32
<b>Bend over (pc6bendover)</b>									
-8 Don't Know	0.33	0.36	0.03	0.11	0.15	0.04	0.18	0.21	0.03
-1 Inapplicable	55.19	54.41	-0.78	48.88	48.93	0.05	39.33	39.62	0.29
1 Yes	31.35	31.69	0.34	36.88	36.88	0.00	41.13	40.91	-0.22
2 No	13.13	13.54	0.41	14.12	14.05	-0.07	19.36	19.26	-0.10
<b>Lift heavy object above head (pc6hvobvrhd)</b>									
-8 Don't Know	0.40	0.45	0.05	0.28	0.30	0.02	1.34	1.34	0.00
1 Yes	90.05	89.64	-0.41	87.87	87.74	-0.13	82.29	82.42	0.13
2 No	9.54	9.91	0.37	11.85	11.96	0.11	16.37	16.24	-0.13
<b>Reach overhead (pc6rechovrhd)</b>									
-8 Don't Know	0.00	0.00	0.00	0.09	0.09	0.00	0.30	0.31	0.01
-7 Refused	0.00	0.00	0.00	0.00	0.00	0.00	0.00	0.00	0.00
-1 Inapplicable	90.05	89.64	-0.41	87.87	87.74	-0.13	82.29	82.42	0.13
1 Yes	4.34	4.45	0.11	5.16	5.24	0.08	7.10	7.02	-0.08
2 No	5.61	5.91	0.30	6.88	6.93	0.05	10.30	10.24	-0.06
<b>Open sealed jar with hands (pc6opnjarwhd)</b>									
-8 Don't Know	0.42	0.42	0.00	0.22	0.21	-0.01	0.66	0.66	0.00

1 Yes	85.93	85.58	-0.35	81.48	81.50	0.02	73.66	73.84	0.18
2 No	13.65	14.01	0.36	18.30	18.29	-0.01	25.68	25.50	-0.18
<b>Grasp small objects (pc6grpsmobj)</b>									
-8 Don't Know	0.00	0.00	0.00	0.00	0.00	0.00	0.00	0.00	0.00
-1 Inapplicable	85.93	85.58	-0.35	81.48	81.50	0.02	73.66	73.84	0.18
1 Yes	12.05	12.09	0.04	15.99	15.97	-0.02	22.29	22.18	-0.11
2 No	2.02	2.33	0.31	2.53	2.53	0.00	4.05	3.98	-0.07

	NHATS Round 6			NHATS Round 6			NHATS Round 6		
	80-84			85-89			90+		
	Original (%)	Revised (%)	Change	Original (%)	Revised (%)	Change	Original (%)	Revised (%)	Change
<b>Gender (r5dgender)</b>									
Male	42.33	42.18	-0.15	40.22	40.17	-0.05	29.76	29.73	-0.03
Female	57.67	57.82	0.15	59.78	59.83	0.05	70.24	70.27	0.03
<b>Race (r15dracehisp)</b>									
White, not Hispanic	79.78	80.03	0.25	80.30	80.78	0.48	79.93	80.70	0.77
Black, not Hispanic	7.41	7.40	-0.01	7.07	7.02	-0.05	7.23	7.06	-0.17
Other	3.82	3.71	-0.11	4.09	3.96	-0.13	2.36	2.30	-0.06
Hispanic	6.72	6.76	0.04	5.73	5.62	-0.11	6.10	6.01	-0.09
More than one race	0.00	0.00	0.00	0.02	0.03	0.01	0.05	0.05	0.00
Don't know, refused	2.27	2.10	-0.17	2.79	2.60	-0.19	4.33	3.87	-0.46
<b>Dementia Status (r6demclas)</b>									
Probable dementia	15.27	15.09	-0.18	23.02	22.77	-0.25	36.57	36.36	-0.21
No dementia	84.73	84.91	0.18	76.98	77.23	0.25	63.43	63.64	0.21
<b>Residential Care Status (r6dresid)</b>									
Community	92.16	92.04	-0.12	81.68	81.35	-0.33	70.56	70.26	-0.30
Residential care not nursing home (SP interview)	6.20	6.38	0.18	15.69	15.86	0.17	21.97	22.45	0.48
Nursing home (SP interview)	1.64	1.58	-0.06	2.63	2.79	0.16	7.47	7.29	-0.18
<b>Living Arrangement (hh6dlvngarrg)</b>									
Alone	35.02	35.31	0.29	46.74	46.75	0.01	55.68	56.09	0.41
With spouse/partner only	40.08	39.69	-0.39	27.85	28.04	0.19	15.22	15.08	-0.14
With spouse/partner and others	8.01	8.03	0.02	6.49	6.40	-0.09	3.68	3.58	-0.10
With others only	16.89	16.98	0.09	18.92	18.80	-0.12	25.42	25.25	-0.17
<b>Go outside by self (mo6doutsfdf)</b>									
1 Did not do by self in last month	7.16	7.05	-0.11	14.37	14.20	-0.17	26.57	26.40	-0.17
2 Did by self in last month/No Difficulty	77.18	77.31	0.13	65.25	65.33	0.08	48.79	49.06	0.27
3 Did by self in last month/Difficulty	14.12	14.12	0.00	15.62	15.73	0.11	17.30	17.19	-0.11
4 DKRF Did by self in last month/No Difficulty	0.00	0.00	0.00	0.32	0.33	0.01	0.00	0.00	0.00
5 DKRF Did by self in last month/Difficulty	0.02	0.02	0.00	0.00	0.00	0.00	0.00	0.00	0.00
6 Did by self in last month/DKRF Difficulty	0.14	0.15	0.01	0.17	0.18	0.01	0.11	0.11	0.00
8 Not done in last month	1.38	1.35	-0.03	4.27	4.23	-0.04	7.23	7.23	0.00
<b>Go outside using devices (mo6doutdevi)</b>									
1 No use of devices to go outside in last month	65.64	65.83	0.19	50.42	50.10	-0.32	28.05	27.99	-0.06
2 Use of devices to go outside in last month	32.90	32.74	-0.16	45.07	45.44	0.37	64.72	64.78	0.06
3 DKRF If used devices to go outside in last month	0.08	0.07	-0.01	0.00	0.00	0.00	0.00	0.00	0.00
4 DKRF If used devices in last month	0.00	0.00	0.00	0.23	0.24	0.01	0.00	0.00	0.00
8 Not done in last month	1.38	1.35	-0.03	4.27	4.23	-0.04	7.23	7.23	0.00
<b>Go outside using help (mo6douthelp)</b>									
1 No help to go outside in last month	82.90	83.14	0.24	71.85	71.89	0.04	53.83	53.97	0.14
2 Had help to go outside in last month	15.72	15.51	-0.21	23.88	23.88	0.00	38.94	38.80	-0.14
3 DKRF If had help to go outside in last month	0.00	0.00	0.00	0.00	0.00	0.00	0.00	0.00	0.00
8 Not done in last month	1.38	1.35	-0.03	4.27	4.23	-0.04	7.23	7.23	0.00

<b>Move inside by self (mo6disndsdf)</b>									
1 Did not do by self in last month	1.99	1.92	-0.07	5.08	4.97	-0.11	8.86	9.12	0.26
2 Did by self in last month/No Difficulty	81.78	81.75	-0.03	70.92	71.42	0.50	61.89	61.62	-0.27
3 Did by self in last month/Difficulty	15.53	15.63	0.10	23.06	22.63	-0.43	27.79	27.77	-0.02
5 DKRF Did by self in last month/Difficulty	0.50	0.51	0.01	0.00	0.00	0.00	0.16	0.20	0.04
6 Did by self in last month/DKRF Difficulty	0.00	0.00	0.00	0.03	0.03	0.00	0.05	0.05	0.00
7 DKRF Did by self in last month/DKRF Difficulty	0.00	0.00	0.00	0.00	0.00	0.00	0.00	0.00	0.00
8 Not done in last month	0.20	0.20	0.00	0.90	0.95	0.05	1.24	1.24	0.00
<b>Move inside using devices (mo6dinsddevi)</b>									
1 No use of devices inside in last month	72.18	72.40	0.22	56.24	55.79	-0.45	34.39	34.28	-0.11
2 Use of devices inside in last month	27.54	27.31	-0.23	41.57	41.97	0.40	64.16	64.22	0.06
3 DKRF If used devices inside in last month	0.08	0.09	0.01	1.05	1.06	0.01	0.21	0.26	0.05
4 DKRF If used devices in last month	0.00	0.00	0.00	0.23	0.24	0.01	0.00	0.00	0.00
8 Not done in last month	0.20	0.20	0.00	0.90	0.95	0.05	1.24	1.24	0.00
<b>Move inside with help (mo6dinsdhelp)</b>									
1 No help to go around inside in last month	90.87	90.95	0.08	83.38	83.65	0.27	74.21	73.89	-0.32
2 Had help to go around inside in last month	8.43	8.34	-0.09	15.71	15.40	-0.31	24.38	24.67	0.29
3 DKRF If had help to go around inside in last month	0.50	0.51	0.01	0.00	0.00	0.00	0.16	0.20	0.04
8 Not done in last month	0.20	0.20	0.00	0.90	0.95	0.05	1.24	1.24	0.00
<b>Get out of bed by self (mo6dbedsdf)</b>									
1 Did not do by self in last month	2.37	2.22	-0.15	4.64	4.63	-0.01	8.98	9.41	0.43
2 Did by self in last month/No Difficulty	79.95	79.99	0.04	71.25	71.25	0.00	61.43	61.11	-0.32
3 Did by self in last month/Difficulty	17.06	17.16	0.10	24.08	24.09	0.01	29.14	29.02	-0.12
4 DKRF Did by self in last month/No Difficulty	0.00	0.00	0.00	0.03	0.03	0.00	0.00	0.00	0.00
5 DKRF Did by self in last month/Difficulty	0.55	0.57	0.02	0.00	0.00	0.00	0.29	0.29	0.00
6 Did by self in last month/DKRF Difficulty	0.00	0.00	0.00	0.00	0.00	0.00	0.00	0.00	0.00
7 DKRF Did by self in last month/DKRF Difficulty	0.07	0.07	0.00	0.00	0.00	0.00	0.16	0.18	0.02
<b>Get out of bed using devices (mo6dbeddevi)</b>									
1 No use of cane or walker to get out of bed in last month	86.57	86.61	0.04	77.05	76.75	-0.30	67.19	66.91	-0.28
2 Use of cane or walker to get out of bed in last month	13.43	13.39	-0.04	22.71	23.01	0.30	32.53	32.80	0.27
3 DKRF If Used cane or walker to get out of bed in last month	0.00	0.00	0.00	0.00	0.00	0.00	0.27	0.29	0.02
4 DKRF If used cane or walker in last month	0.00	0.00	0.00	0.23	0.24	0.01	0.00	0.00	0.00
<b>Get out of bed with help (mo6dbedhelp)</b>									
1 No help to get out of bed in last month	92.80	92.98	0.18	88.51	88.49	-0.02	81.83	81.46	-0.37
2 Had help to get out of bed in last month	6.64	6.45	-0.19	11.46	11.48	0.02	17.73	18.08	0.35
3 DKRF If had help to get out of bed in last month	0.56	0.57	0.01	0.03	0.03	0.00	0.44	0.47	0.03
<b>Eat by self (sc6deatsdf)</b>									
1 Did not do by self in last month	0.82	0.78	-0.04	0.86	0.86	0.00	2.03	2.06	0.03
2 No Difficulty by self (and when using utensils)	94.53	94.56	0.03	88.55	88.51	-0.04	81.43	80.85	-0.58
3 Difficulty by self (and when using utensils)	4.53	4.56	0.03	10.36	10.39	0.03	16.54	17.09	0.55
6 Did by self in last month/DKRF Difficulty	0.00	0.00	0.00	0.00	0.00	0.00	0.00	0.00	0.00
8 Not done in last month	0.11	0.11	0.00	0.23	0.24	0.01	0.00	0.00	0.00
<b>Eat using devices (sc6deatdevi)</b>									
1 No use of adapted utensils in last month	99.54	99.56	0.02	99.30	99.30	0.00	98.18	98.22	0.04
2 Use of adapted utensils in last month	0.35	0.33	-0.02	0.47	0.47	0.00	1.70	1.67	-0.03





1 No use of dressing devices in last month	93.12	93.12	0.00	93.86	93.75	-0.11	91.19	90.97	-0.22
2 Use of dressing devices in last month	6.34	6.34	0.00	5.42	5.50	0.08	7.40	7.59	0.19
3 DKRF If use of dressing devices in last month	0.00	0.00	0.00	0.08	0.08	0.00	0.00	0.00	0.00
8 Not done in last month	0.20	0.20	0.00	0.61	0.64	0.03	1.41	1.43	0.02
9 DKRF If dressed in last month	0.33	0.34	0.01	0.03	0.03	0.00	0.00	0.00	0.00
<b>Dress with help (sc6ddreshelp)</b>									
1 No help dressing in last month	84.03	84.34	0.31	77.63	77.66	0.03	64.05	63.86	-0.19
2 Had help dressing in last month	15.44	15.12	-0.32	21.73	21.67	-0.06	34.54	34.71	0.17
3 DKRF If had help dressing in last month	0.00	0.00	0.00	0.00	0.00	0.00	0.00	0.00	0.00
8 Not done in last month	0.20	0.20	0.00	0.61	0.64	0.03	1.41	1.43	0.02
9 DKRF If dressed in last month	0.33	0.34	0.01	0.03	0.03	0.00	0.00	0.00	0.00
<b>Laundry by self (ha6dlaunself)</b>									
1 Did not do by self in last month	40.38	39.90	-0.48	47.41	47.21	-0.20	57.77	57.68	-0.09
2 Did by self in last month/No Difficulty	54.99	55.46	0.47	45.98	45.92	-0.06	35.25	35.37	0.12
3 Did by self in last month/Difficulty	4.56	4.57	0.01	6.28	6.55	0.27	6.91	6.87	-0.04
4 DKRF Did by self in last month/No Difficulty	0.00	0.00	0.00	0.32	0.33	0.01	0.00	0.00	0.00
8 Not done in last month	0.07	0.07	0.00	0.00	0.00	0.00	0.07	0.07	0.00
<b>Shopping by self (ha6dshopsself)</b>									
1 Did not do by self in last month	44.24	44.05	-0.19	52.52	52.27	-0.25	69.31	69.38	0.07
2 Did by self in last month/No Difficulty	46.49	46.78	0.29	37.81	37.80	-0.01	22.85	22.96	0.11
3 Did by self in last month/Difficulty	8.86	8.80	-0.06	7.72	8.03	0.31	6.51	6.49	-0.02
4 DKRF Did by self in last month/No Difficulty	0.00	0.00	0.00	0.03	0.03	0.00	0.00	0.00	0.00
6 Did by self in last month/DKRF Difficulty	0.00	0.00	0.00	0.00	0.00	0.00	0.00	0.00	0.00
7 DKRF Did by self in last month/DKRF Difficulty	0.00	0.00	0.00	0.00	0.00	0.00	0.00	0.00	0.00
8 Not done in last month	0.41	0.37	-0.04	1.92	1.87	-0.05	1.33	1.17	-0.16
<b>Meals by self (ha6dmealsself)</b>									
1 Did not do by self in last month	33.34	33.18	-0.16	45.13	44.90	-0.23	57.16	57.44	0.28
2 Did by self in last month/No Difficulty	55.28	55.57	0.29	43.05	43.36	0.31	30.85	30.60	-0.25
3 Did by self in last month/Difficulty	11.00	10.87	-0.13	11.06	11.05	-0.01	11.57	11.52	-0.05
5 DKRF Did by self in last month/Difficulty	0.00	0.00	0.00	0.00	0.00	0.00	0.00	0.00	0.00
6 Did by self in last month/DKRF Difficulty	0.00	0.00	0.00	0.00	0.00	0.00	0.00	0.00	0.00
7 DKRF Did by self in last month/DKRF Difficulty	0.00	0.00	0.00	0.00	0.00	0.00	0.00	0.00	0.00
8 Not done in last month	0.38	0.38	0.00	0.76	0.70	-0.06	0.42	0.44	0.02
<b>Banking by self (ha6dbanksself)</b>									
1 Did not do by self in last month	34.48	34.16	-0.32	42.63	42.57	-0.06	57.24	57.04	-0.20
2 Did by self in last month/No Difficulty	58.39	58.79	0.40	48.73	49.02	0.29	35.49	35.64	0.15
3 Did by self in last month/Difficulty	6.36	6.34	-0.02	7.62	7.45	-0.17	5.71	5.87	0.16
4 DKRF Did by self in last month/No Difficulty	0.03	0.03	0.00	0.00	0.00	0.00	0.15	0.14	-0.01
6 Did by self in last month/DKRF Difficulty	0.00	0.00	0.00	0.00	0.00	0.00	0.06	0.06	0.00
7 DKRF Did by self in last month/DKRF Difficulty	0.60	0.55	-0.05	0.30	0.31	0.01	0.49	0.53	0.04
8 Not done in last month	0.14	0.14	0.00	0.72	0.65	-0.07	0.86	0.72	-0.14
<b>Walk 6 blocks (pc6walk6blks)</b>									
-8 Don't Know	1.47	1.50	0.03	2.37	2.36	-0.01	1.96	1.99	0.03
1 Yes	50.79	51.08	0.29	38.46	37.99	-0.47	17.94	17.92	-0.02
2 No	47.74	47.42	-0.32	59.17	59.65	0.48	80.10	80.09	-0.01

<b>Walk 3 blocks (pc6walk3blks)</b>									
-8 Don't Know	0.85	0.91	0.06	1.50	1.53	0.03	0.78	0.76	-0.02
-1 Inapplicable	50.79	51.08	0.29	38.46	37.99	-0.47	17.94	17.92	-0.02
1 Yes	10.80	10.73	-0.07	8.25	8.49	0.24	8.31	8.20	-0.11
2 No	37.56	37.29	-0.27	51.79	51.98	0.19	72.97	73.11	0.14
<b>Walk up 20 stairs (pc6up20stair)</b>									
-8 Don't Know	1.95	2.05	0.10	2.38	2.42	0.04	2.64	2.77	0.13
-7 Refused	0.04	0.04	0.00	0.00	0.00	0.00	0.00	0.00	0.00
1 Yes	59.86	59.98	0.12	47.21	47.23	0.02	30.28	30.35	0.07
2 No	38.15	37.93	-0.22	50.41	50.35	-0.06	67.08	66.87	-0.21
<b>Walk up 10 stairs (pc6up10stair)</b>									
-8 Don't Know	1.29	1.36	0.07	0.87	0.98	0.11	1.17	1.19	0.02
-1 Inapplicable	59.86	59.98	0.12	47.21	47.23	0.02	30.28	30.35	0.07
1 Yes	12.62	12.81	0.19	13.45	13.34	-0.11	11.42	11.51	0.09
2 No	26.23	25.85	-0.38	38.47	38.45	-0.02	57.13	56.95	-0.18
<b>Carry 20 pounds (pc6car20pnds)</b>									
-8 Don't Know	0.53	0.58	0.05	1.24	1.26	0.02	2.35	2.42	0.07
1 Yes	60.95	60.97	0.02	47.28	47.12	-0.16	25.12	25.05	-0.07
2 No	38.52	38.45	-0.07	51.48	51.62	0.14	72.53	72.53	0.00
<b>Carry 10 pounds (pc6car10pnds)</b>									
-8 Don't Know	1.01	1.03	0.02	0.72	0.78	0.06	2.53	2.60	0.07
-1 Inapplicable	60.95	60.97	0.02	47.28	47.12	-0.16	25.12	25.05	-0.07
1 Yes	13.56	13.73	0.17	16.01	16.09	0.08	15.95	15.65	-0.30
2 No	24.47	24.28	-0.19	35.99	36.01	0.02	56.40	56.70	0.30
<b>Get down on knees (pc6geonknees)</b>									
-8 Don't Know	1.37	1.41	0.04	1.67	1.69	0.02	3.13	3.25	0.12
1 Yes	32.21	32.30	0.09	22.38	22.38	0.00	15.88	15.67	-0.21
2 No	66.42	66.29	-0.13	75.95	75.93	-0.02	80.99	81.08	0.09
<b>Bend over (pc6bendover)</b>									
-8 Don't Know	0.10	0.10	0.00	0.46	0.48	0.02	0.55	0.54	-0.01
-1 Inapplicable	32.21	32.30	0.09	22.38	22.38	0.00	15.88	15.67	-0.21
1 Yes	43.41	43.57	0.16	42.80	43.04	0.24	34.55	34.57	0.02
2 No	24.28	24.03	-0.25	34.36	34.09	-0.27	49.02	49.22	0.20
<b>Lift heavy object above head (pc6hvobovrhd)</b>									
-8 Don't Know	1.55	1.50	-0.05	2.89	2.90	0.01	2.63	2.57	-0.06
1 Yes	72.86	72.96	0.10	64.08	64.13	0.05	43.79	43.71	-0.08
2 No	25.59	25.55	-0.04	33.03	32.97	-0.06	53.57	53.72	0.15
<b>Reach overhead (pc6rechovrhd)</b>									
-8 Don't Know	0.24	0.26	0.02	0.57	0.63	0.06	1.32	1.30	-0.02
-7 Refused	0.00	0.00	0.00	0.00	0.00	0.00	0.20	0.17	-0.03
-1 Inapplicable	72.86	72.96	0.10	64.08	64.13	0.05	43.79	43.71	-0.08
1 Yes	8.72	8.71	-0.01	11.24	11.33	0.09	14.96	14.87	-0.09
2 No	18.18	18.08	-0.10	24.11	23.91	-0.20	39.73	39.95	0.22
<b>Open sealed jar with hands (pc6opnjarwhd)</b>									
-8 Don't Know	0.73	0.71	-0.02	0.76	0.74	-0.02	3.09	3.16	0.07

1 Yes	66.83	66.91	0.08	59.82	59.88	0.06	44.33	44.56	0.23
2 No	32.44	32.28	-0.16	39.41	39.38	-0.03	52.58	52.28	-0.30
<b>Grasp small objects (pc6grpsmobj)</b>									
-8 Don't Know	0.12	0.11	-0.01	0.43	0.39	-0.04	0.72	0.70	-0.02
-1 Inapplicable	66.83	66.91	0.08	59.82	59.88	0.06	44.33	44.56	0.23
1 Yes	27.64	27.57	-0.07	32.48	32.48	0.00	44.63	44.60	-0.03
2 No	5.41	5.41	0.00	7.27	7.24	-0.03	10.31	10.14	-0.17

National Study of Caregiving (NSOC, 2015)			
	Original (%)	Revised (%)	Change
<b>Gender (c5dgender)</b>			
Missing	0.71	0.70	-0.01
Male	37.36	37.24	-0.12
Female	61.93	62.05	0.12
<b>Relationship to SP (c5relatnshp)</b>			
Spouse	21.20	21.19	-0.01
Daughter or Son	44.41	44.42	0.01
Other relative	23.31	23.26	-0.05
Nonrelative	11.08	11.13	0.05
<b>Race (crl5dcgracehisp)</b>			
White, not Hispanic	67.38	67.10	-0.28
Black, not Hispanic	12.49	12.16	-0.33
Other	5.49	5.43	-0.06
Hispanic	9.22	9.91	0.69
More than one race	0.95	1.00	0.05
Don't know, refused	4.47	4.40	-0.07
<b>Age (chd5age)</b>			
Missing	2.53	2.59	0.06
Under 20	0.97	0.90	-0.07
20-29	4.32	4.28	-0.04
30-39	6.16	6.54	0.38
40-49	13.12	13.33	0.21
50-59	23.24	23.15	-0.09
60-69	25.58	25.49	-0.09
70-79	15.49	15.19	-0.30
80-89	7.84	7.76	-0.08
90+	0.75	0.77	0.02
<b>Education (chd5deduc)</b>			
Don't know, refused	0.93	0.94	0.01
>=High school	36.83	36.73	-0.10
Some college	25.34	25.06	-0.28
>=College	36.90	37.27	0.37
<b>Caregiving Hours</b>			
0 -10	50.01	50.48	0.47
> 10 - 20	21.44	21.62	0.18
> 20 - 40	12.86	12.71	-0.15
> 40	15.69	15.19	-0.50
<b>How often help with chores (cca5hwoftchs)</b>			
-7 Refused	0.07	0.08	0.01
1 Every day	26.84	26.42	-0.42
2 Most days	15.85	16.09	0.24

3 Some days	23.87	23.95	0.08
4 Rarely	12.34	12.63	0.29
5 Never	21.03	20.83	-0.20
<b>How often shopped for SP (cca5hwofthsp)</b>			
-8 Don't Know	0.28	0.28	0.00
-7 Refused	0.07	0.08	0.01
1 Every day	9.38	8.90	-0.48
2 Most days	22.11	22.16	0.05
3 Some days	39.61	40.05	0.44
4 Rarely	14.46	14.62	0.16
5 Never	14.08	13.90	-0.18
<b>Help order medicines (cca5hlpordmd)</b>			
1 Yes	42.67	42.94	0.27
2 No	57.04	56.78	-0.26
3 SP does not take any prescribed medicines	0.29	0.28	-0.01
<b>Help with bills or banking (cca5hlpbnkng)</b>			
1 Yes	54.68	54.88	0.20
2 No	45.32	45.12	-0.20
<b>Use computer to shop for groceries (cca5cmpgrcry)</b>			
-8 Don't Know	0.04	0.05	0.01
-1 Inapplicable	14.43	14.27	-0.16
1 Yes	12.32	12.40	0.08
2 No	73.21	73.28	0.07
<b>Use computer to order medicines (cca5cmpordrx)</b>			
-1 Inapplicable	57.33	57.06	-0.27
1 Yes	6.55	6.60	0.05
2 No	36.12	36.33	0.21
<b>Use computer for bills or banking</b>			
-1 Inapplicable	45.32	45.12	-0.20
1 Yes	21.08	21.00	-0.08
2 No	33.59	33.88	0.29
<b>How often help with personal care (cca5hwofthpc)</b>			
-8 Don't Know	0.07	0.07	0.00
-7 Refused	0.04	0.05	0.01
1 Every day	11.00	10.67	-0.33
2 Most days	6.56	6.51	-0.05
3 Some days	16.93	17.04	0.11
4 Rarely	16.95	16.82	-0.13
5 Never	48.45	48.83	0.38
<b>How often help with getting around in home (cca5hwofthom)</b>			
-8 Don't Know	0.04	0.06	0.02
1 Every day	10.63	10.39	-0.24
2 Most days	9.48	9.49	0.01

3 Some days	31.71	31.53	-0.18
4 Rarely	19.68	19.79	0.11
5 Never	28.46	28.74	0.28
<b>Have friends or family to talk to (cse5frfamtlk)</b>			
-8 Don't Know	0.29	0.29	0.00
-7 Refused	0.14	0.13	-0.01
1 Yes	86.46	86.76	0.30
2 No	13.11	12.82	-0.29
<b>Have friends or family to help with daily activities (cse5frfamact)</b>			
-8 Don't Know	0.34	0.33	-0.01
-7 Refused	0.04	0.04	0.00
1 Yes	55.00	54.89	-0.11
2 No	44.62	44.73	0.11
<b>Have friends or family to help with SP (cse5frfamhlp)</b>			
-8 Don't Know	0.42	0.42	0.00
1 Yes	69.31	69.68	0.37
2 No	30.27	29.90	-0.37
<b>Gone to support group (cse5spptgrp)</b>			
-8 Don't Know	0.32	0.31	-0.01
-7 Refused	0.05	0.04	-0.01
1 Yes	3.86	3.86	0.00
2 No	95.77	95.79	0.02
<b>Visit family or friends (cpp5vstfrfam)</b>			
-8 Don't Know	0.45	0.45	0.00
-7 Refused	0.06	0.06	0.00
1 Yes	79.80	79.77	-0.03
2 No	19.69	19.72	0.03
<b>Helping SP ever keep you from visiting family or friends (cpp5hlpkptvs)</b>			
-1 Inapplicable	0.51	0.51	0.00
1 Yes	13.58	13.42	-0.16
2 No	85.91	86.07	0.16
<b>Importance of visiting (cpp5impvst)</b>			
-8 Don't Know	0.07	0.07	0.00
-1 Inapplicable	0.51	0.51	0.00
1 Very important	49.95	50.38	0.43
2 Somewhat important	36.03	35.73	-0.30
3 Not so important	13.44	13.31	-0.13
<b>Attend religious services (cpp5gorelgs)</b>			
-8 Don't Know	0.45	0.45	0.00
-7 Refused	0.13	0.12	-0.01
1 Yes	61.50	61.99	0.49
2 No	37.92	37.44	-0.48
<b>Helping SP ever keep you from religious services (cpp5hlpkptrl)</b>			

-1 Inapplicable	0.58	0.57	-0.01
1 Yes	8.21	8.06	-0.15
2 No	91.21	91.37	0.16
<b>Importance of religious services (cpp5imprel)</b>			
-7 Refused	0.33	0.34	0.01
-1 Inapplicable	0.58	0.57	-0.01
1 Very important	53.75	54.02	0.27
2 Somewhat important	20.85	20.80	-0.05
3 Not so important	24.49	24.26	-0.23
<b>Participate in group activities (cpp5prtgroup)</b>			
-8 Don't Know	0.45	0.45	0.00
-7 Refused	0.02	0.02	0.00
1 Yes	35.48	35.66	0.18
2 No	64.04	63.87	-0.17
<b>Helping SP ever keep you from group activities (cpp5hlpkptgr)</b>			
-1 Inapplicable	0.48	0.47	-0.01
1 Yes	7.29	7.34	0.05
2 No	92.23	92.19	-0.04
<b>Importance of group activities (cpp5impgroup)</b>			
-8 Don't Know	0.04	0.05	0.01
-1 Inapplicable	0.48	0.47	-0.01
1 Very important	23.54	23.69	0.15
2 Somewhat important	29.05	29.19	0.14
3 Not so important	46.89	46.60	-0.29
<b>Go out for enjoyment (cpp5go4fun)</b>			
-8 Don't Know	0.45	0.45	0.00
-7 Refused	0.06	0.06	0.00
1 Yes	82.55	82.89	0.34
2 No	16.94	16.60	-0.34
<b>Helping SP ever keep you from going out for enjoyment (cpp5hlpkptgo)</b>			
-8 Don't Know	0.48	0.48	0.00
-7 Refused	0.02	0.02	0.00
1 Yes	11.02	10.85	-0.17
2 No	88.48	88.65	0.17
<b>Importance of going out (cpp5impgo)</b>			
-8 Don't Know	0.58	0.58	0.00
-7 Refused	0.03	0.03	0.00
1 Very important	39.30	39.40	0.10
2 Somewhat important	40.05	39.91	-0.14
3 Not so important	20.04	20.08	0.04
<b>Work for pay (cpp5wrk4pay)</b>			
-8 Don't Know	0.45	0.45	0.00
-7 Refused	0.02	0.02	0.00

1 Yes	34.44	34.95	0.51
2 No	65.08	64.57	-0.51
<b>Helping SP ever keep you from working (cpp5hlpkptwk)</b>			
-1 Inapplicable	0.48	0.47	-0.01
1 Yes	7.92	7.85	-0.07
2 No	91.60	91.68	0.08
<b>Volunteer (cpp5volun)</b>			
-8 Don't Know	0.45	0.45	0.00
1 Yes	26.32	26.72	0.40
2 No	73.23	72.83	-0.40
<b>Helping SP ever keep you from volunteering (cpp5hlpkptvo)</b>			
-8 Don't Know	0.03	0.03	0.00
-7 Refused	0.02	0.02	0.00
-1 Inapplicable	0.45	0.45	0.00
1 Yes	5.77	5.66	-0.11
2 No	93.73	93.84	0.11
<b>Provide care for someone else (cpp5careothr)</b>			
-8 Don't Know	0.57	0.57	0.00
1 Yes	37.17	37.47	0.30
2 No	62.25	61.96	-0.29
<b>Helping SP ever keep you from providing care (cpp5hlpkptca)</b>			
-8 Don't Know	0.48	0.47	-0.01
-7 Refused	0.02	0.02	0.00
1 Yes	3.54	3.54	0.00
2 No	95.96	95.96	0.00
<b>Enjoy being with SP (cac5joylevel)</b>			
-8 Don't Know	0.26	0.26	0.00
-7 Refused	0.14	0.15	0.01
1 A lot	83.52	83.56	0.04
2 Some	12.73	12.77	0.04
3 A little	2.74	2.64	-0.10
4 Not at all	0.61	0.62	0.01
<b>How much does SP argue with you (cac5arguelv)</b>			
-8 Don't Know	0.14	0.13	-0.01
1 A lot	10.09	10.03	-0.06
2 Some	18.75	18.70	-0.05
3 A little	30.40	30.29	-0.11
4 Not at all	40.62	40.85	0.23
<b>How much does SP appreciate you (cac5spapprlv)</b>			
-8 Don't Know	1.25	1.24	-0.01
-7 Refused	0.02	0.04	0.02
1 A lot	85.62	85.60	-0.02
2 Some	9.32	9.32	0.00



3 A little	2.60	2.58	-0.02
4 Not at all	1.19	1.22	0.03
<b>How much does SP get on your nerves (cac5nerveslv)</b>			
-8 Don't Know	0.50	0.52	0.02
-7 Refused	0.09	0.11	0.02
1 A lot	9.65	9.53	-0.12
2 Some	22.64	22.43	-0.21
3 A little	31.17	31.10	-0.07
4 Not at all	35.95	36.31	0.36
<b>Financial difficulty helping SP (cac5diffinc)</b>			
-8 Don't Know	0.20	0.22	0.02
-7 Refused	0.10	0.11	0.01
1 Yes	17.81	17.81	0.00
2 No	81.88	81.85	-0.03
<b>Emotional difficulty helping SP (cac5diffemo)</b>			
-8 Don't Know	0.53	0.55	0.02
1 Yes	40.13	39.87	-0.26
2 No	59.34	59.57	0.23
<b>Physical difficulty helping SP (cac5diffphy)</b>			
-8 Don't Know	0.22	0.21	-0.01
1 Yes	20.23	20.03	-0.20
2 No	79.55	79.76	0.21